



# Communauté de communes MIDI CORREZIEN PLUi

## Retrait-gonflement des argiles

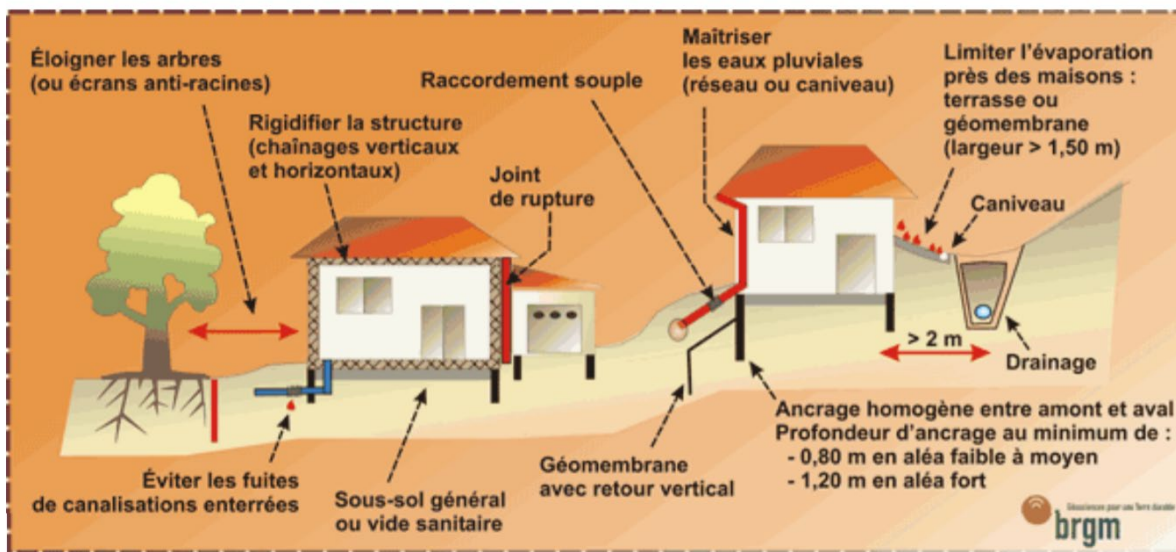
(Février 2026)



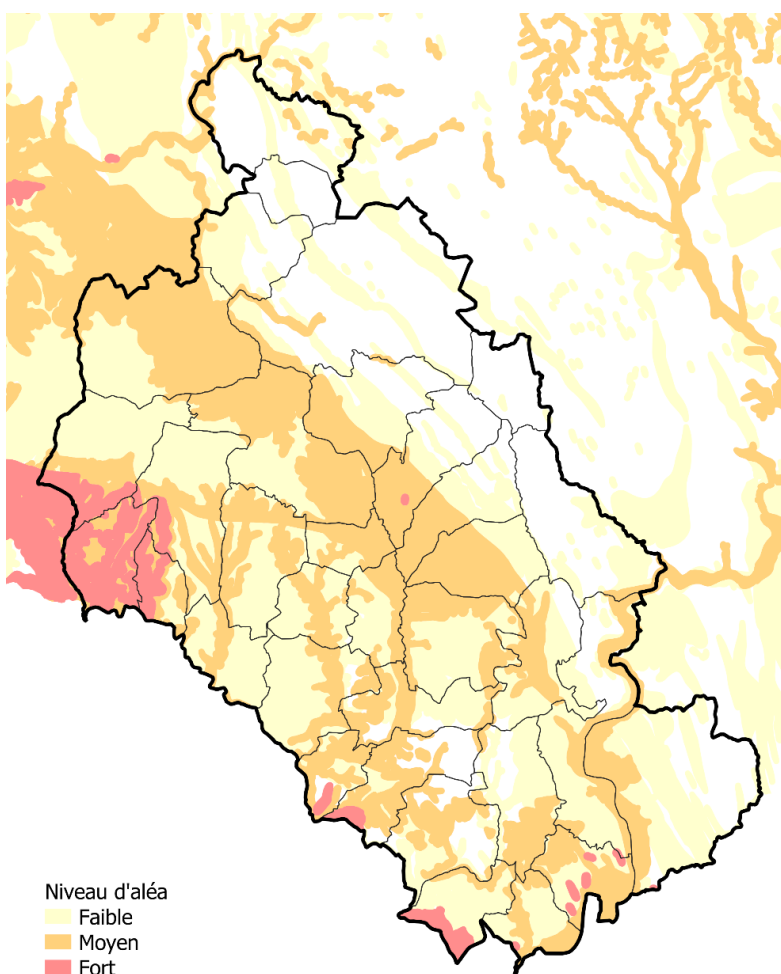
# Sommaire

<b>1</b>	<b>Présentation générale</b>	<b>4</b>
<b>2</b>	<b>Cartographies communales</b>	<b>5</b>
2.1	Albignac	5
2.2	Altiliac	6
2.3	Astailiac	7
2.4	Aubazine	8
2.5	Beaulieu-sur-Dordogne	9
2.6	Beynat	10
2.7	Bilhac	11
2.8	Branceilles	12
2.9	Chauffour-sur-Vell	13
2.10	Chenailler-Mascheix	14
2.11	Collonges-la-Rouge	15
2.12	Curemonte	16
2.13	La Chapelle-aux-Saints	17
2.14	Lagleygeolle	18
2.15	Lanteuil	19
2.16	Le Pescher	20
2.17	Ligneyrac	21
2.18	Liourdres	22
2.19	Lostanges	23
2.20	Marcillac-la-Croze	24
2.21	Mémoire	25
2.22	Meysac	26
2.23	Noailhac	27
2.24	Nonards	28
2.25	Palazinges	29
2.26	Puy-d'Arnac	30
2.27	Queyssac-les-Vignes	31
2.28	Saillac	32
2.29	Saint-Bazile-de-Meyssac	33
2.30	Saint-Julien-Maumont	34
2.31	Sérilhac	35
2.32	Sioniac	36
2.33	Tudeils	37
2.34	Végennes	38

# 1 Présentation générale



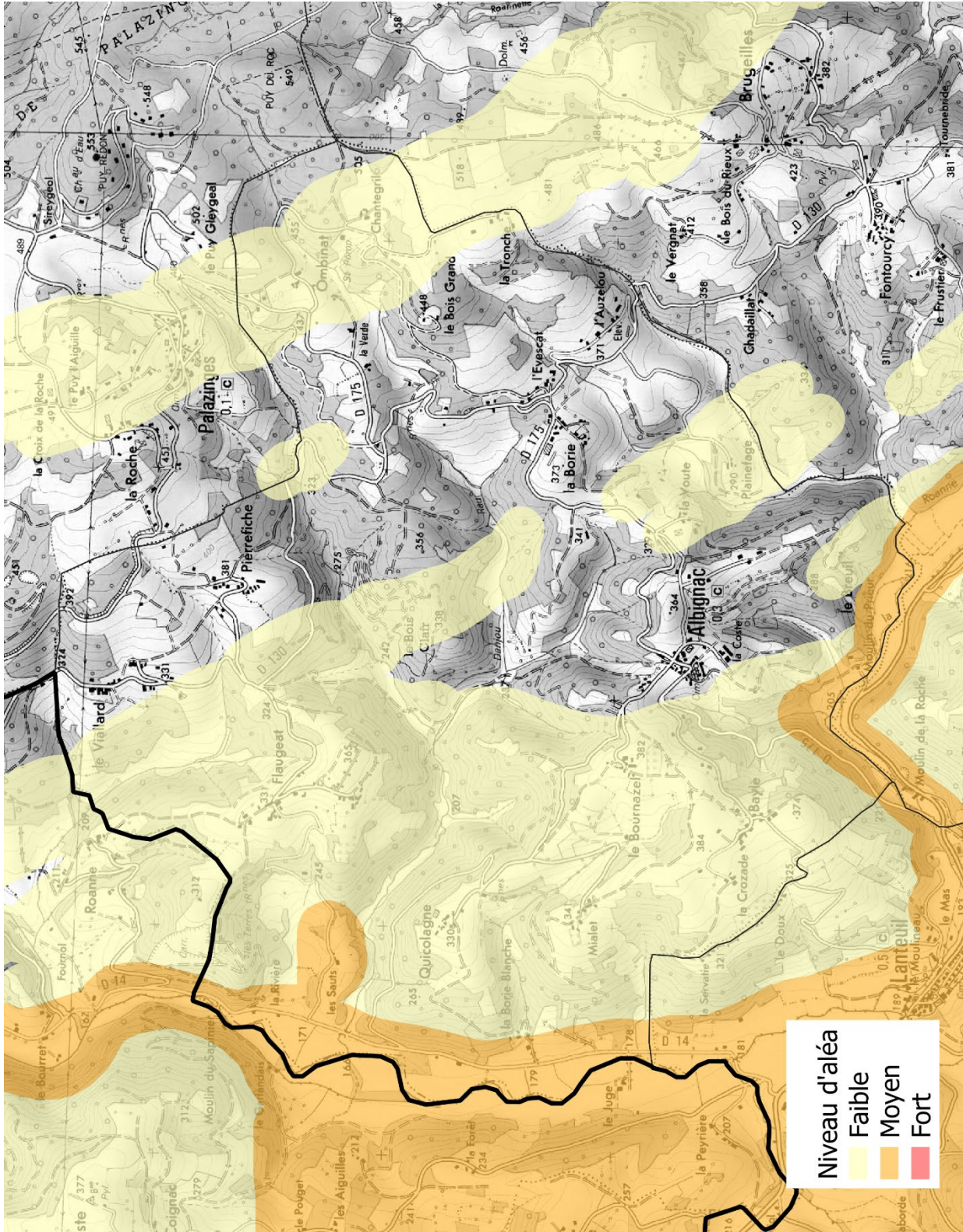
Dispositions préventives – Construire sur un sol sensible au retrait-gonflement des argiles (source : BRGM)



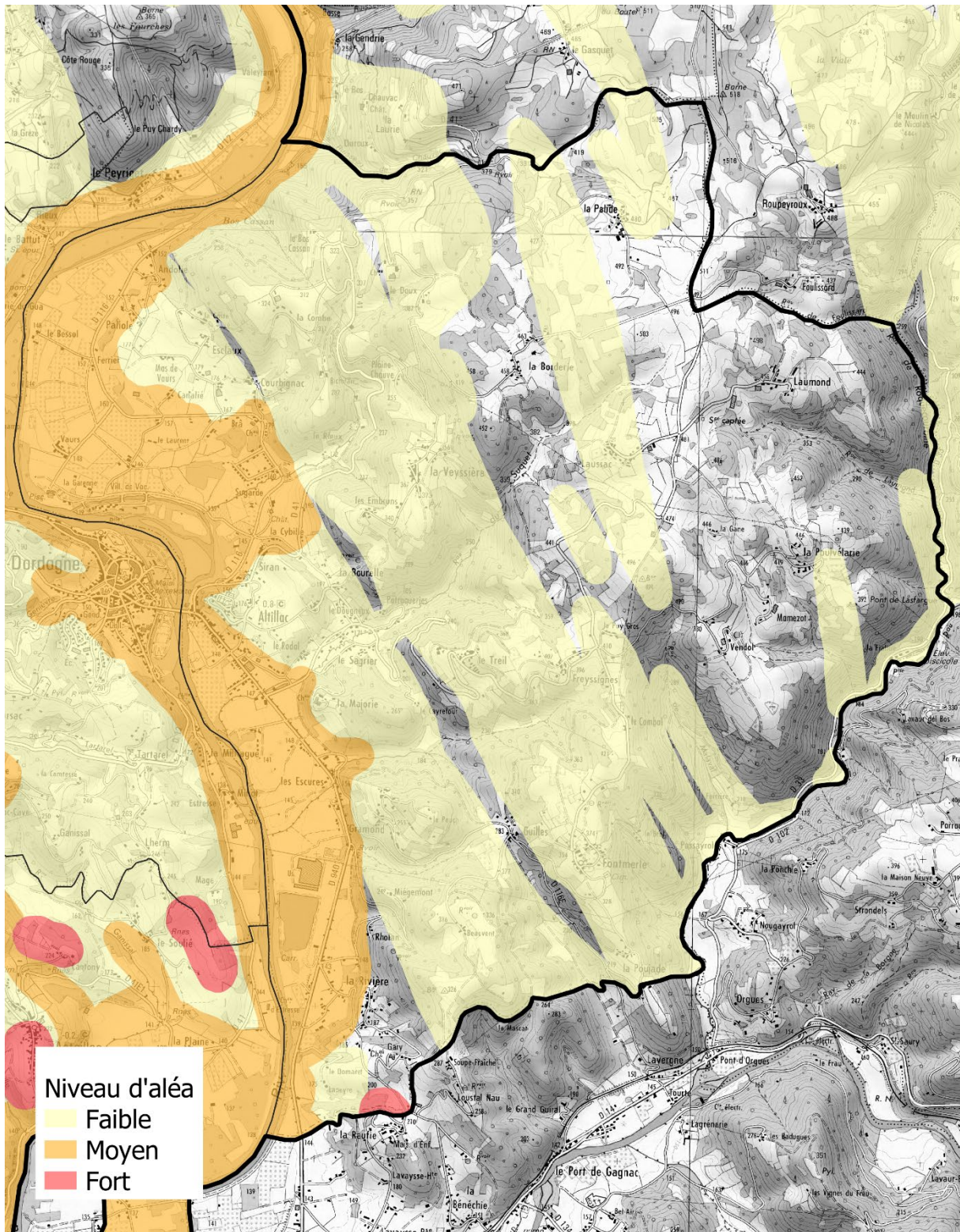
Aléa retrait-gonflement des argiles sur le territoire intercommunal (source : [www.georisques.gouv.fr](http://www.georisques.gouv.fr))

## 2 Cartographies communales

### 2.1 Albignac

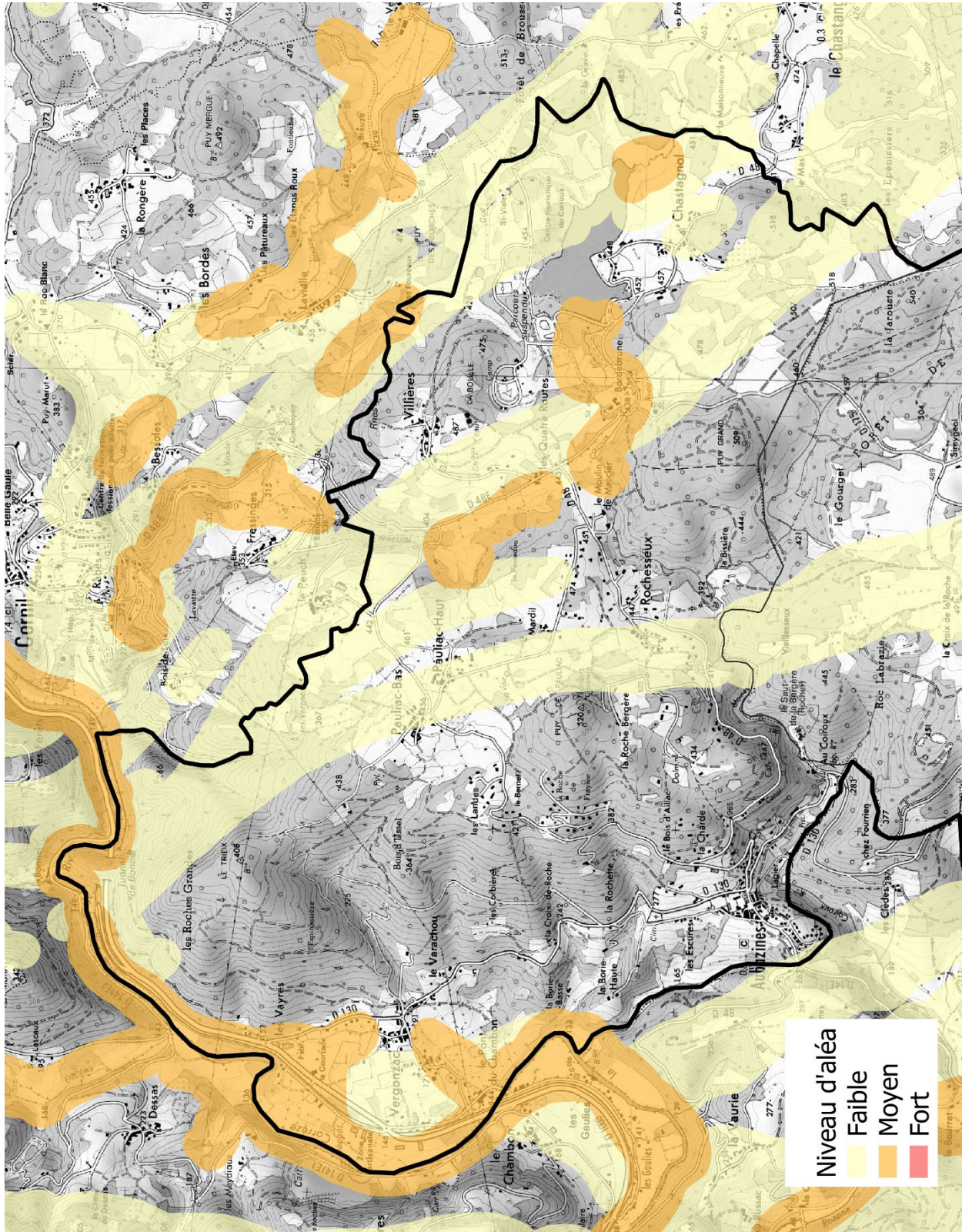


## 2.2 Atiliac

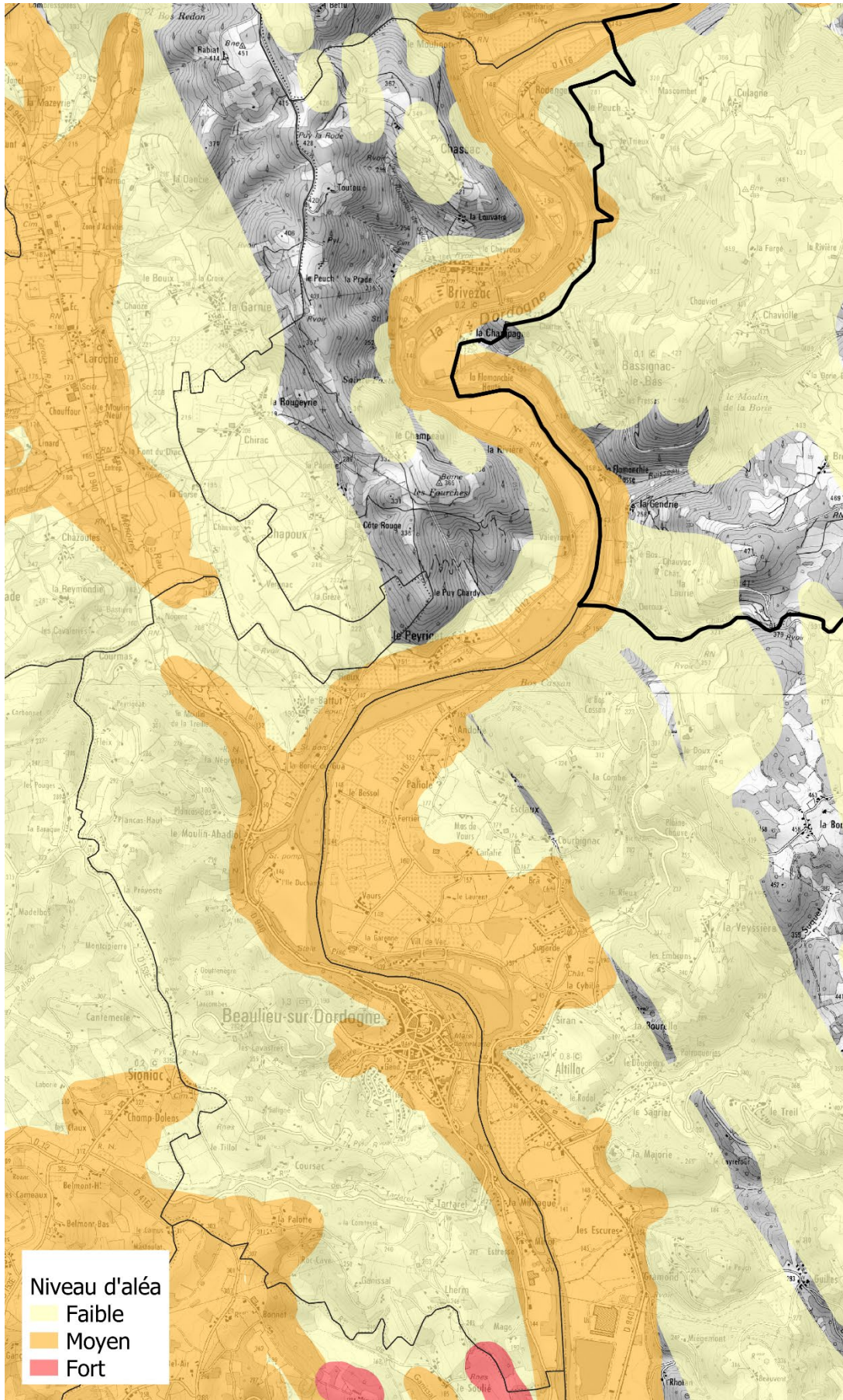




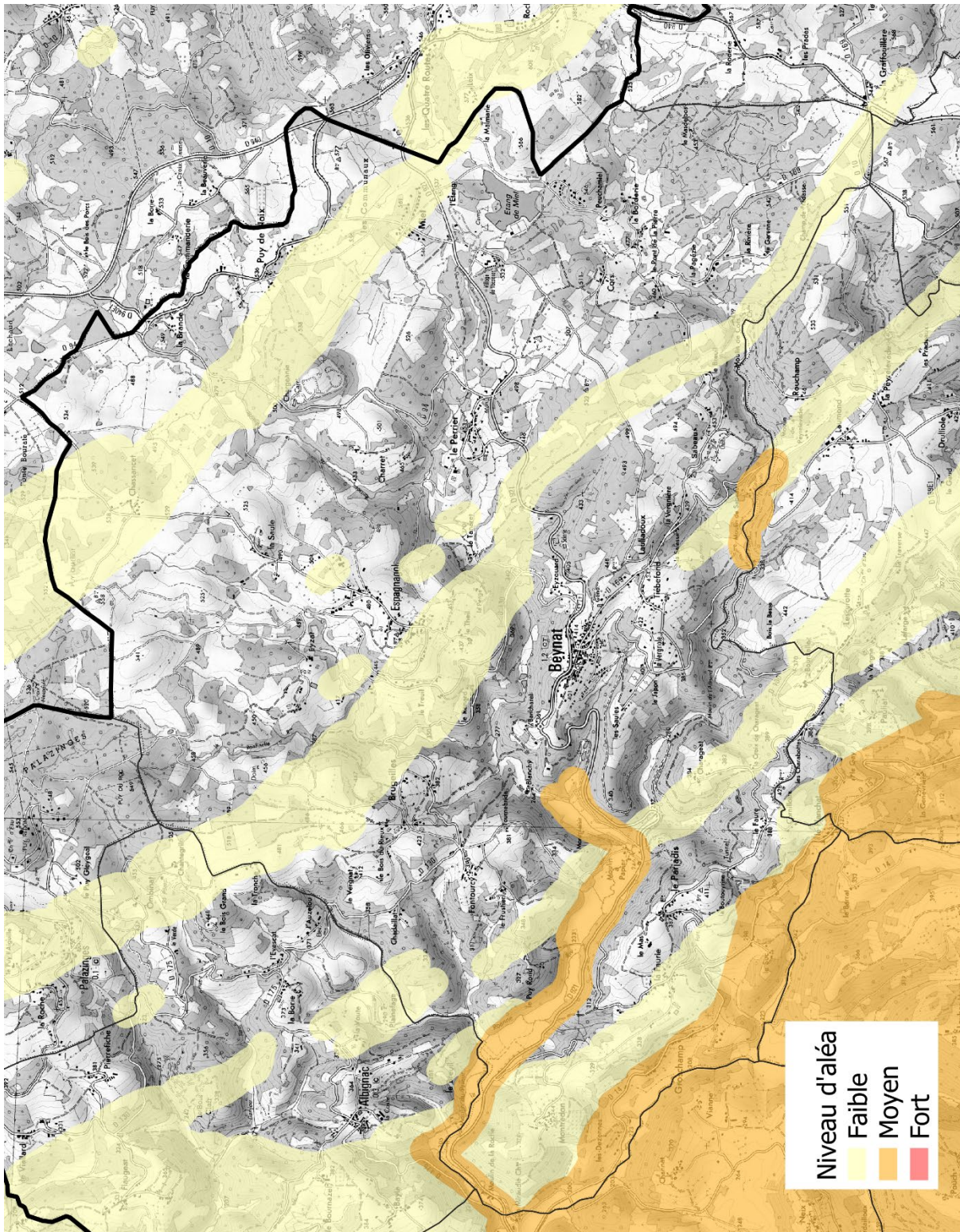
## 2.4 Aubazine



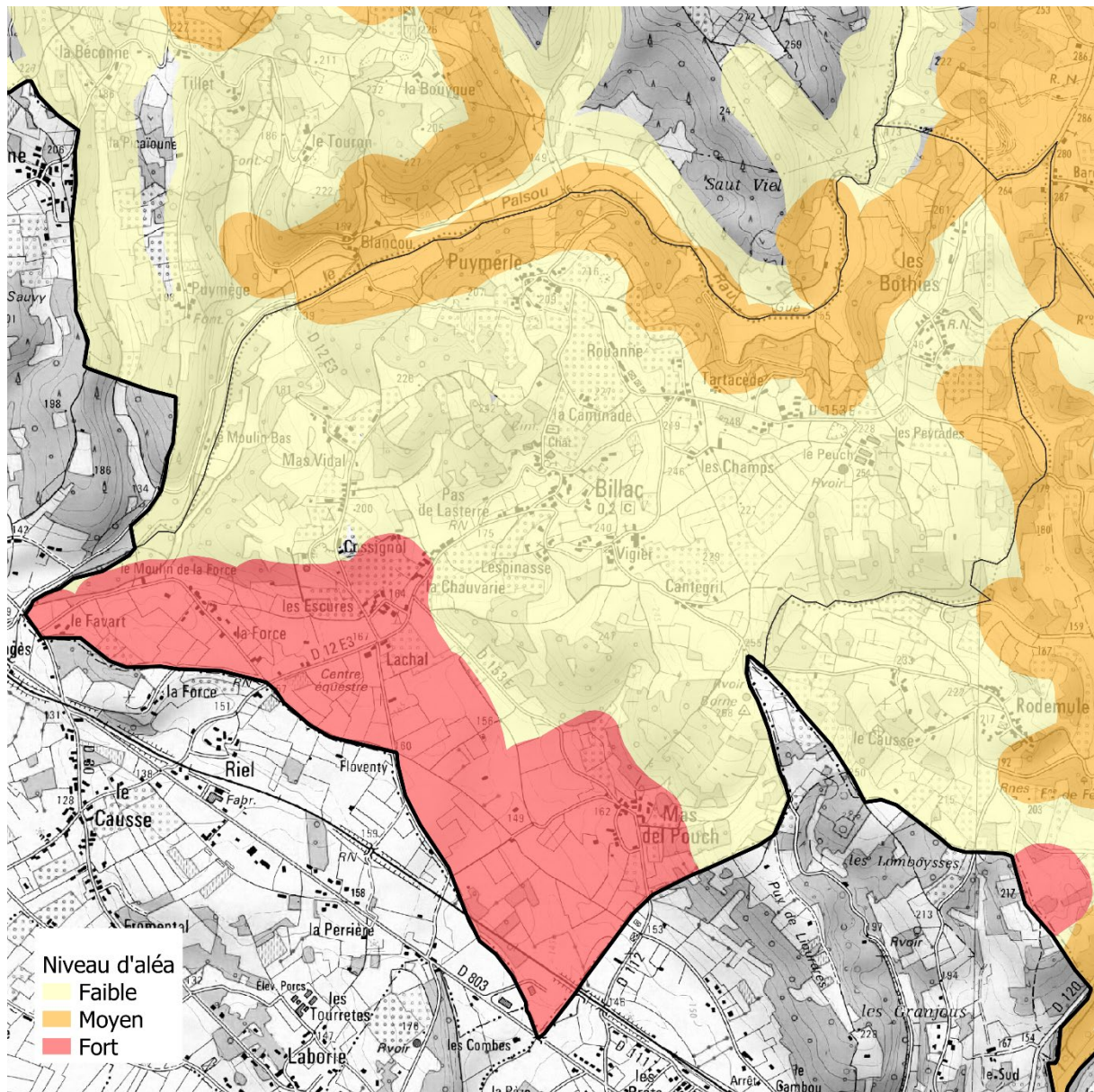
## 2.5 Beaulieu-sur-Dordogne



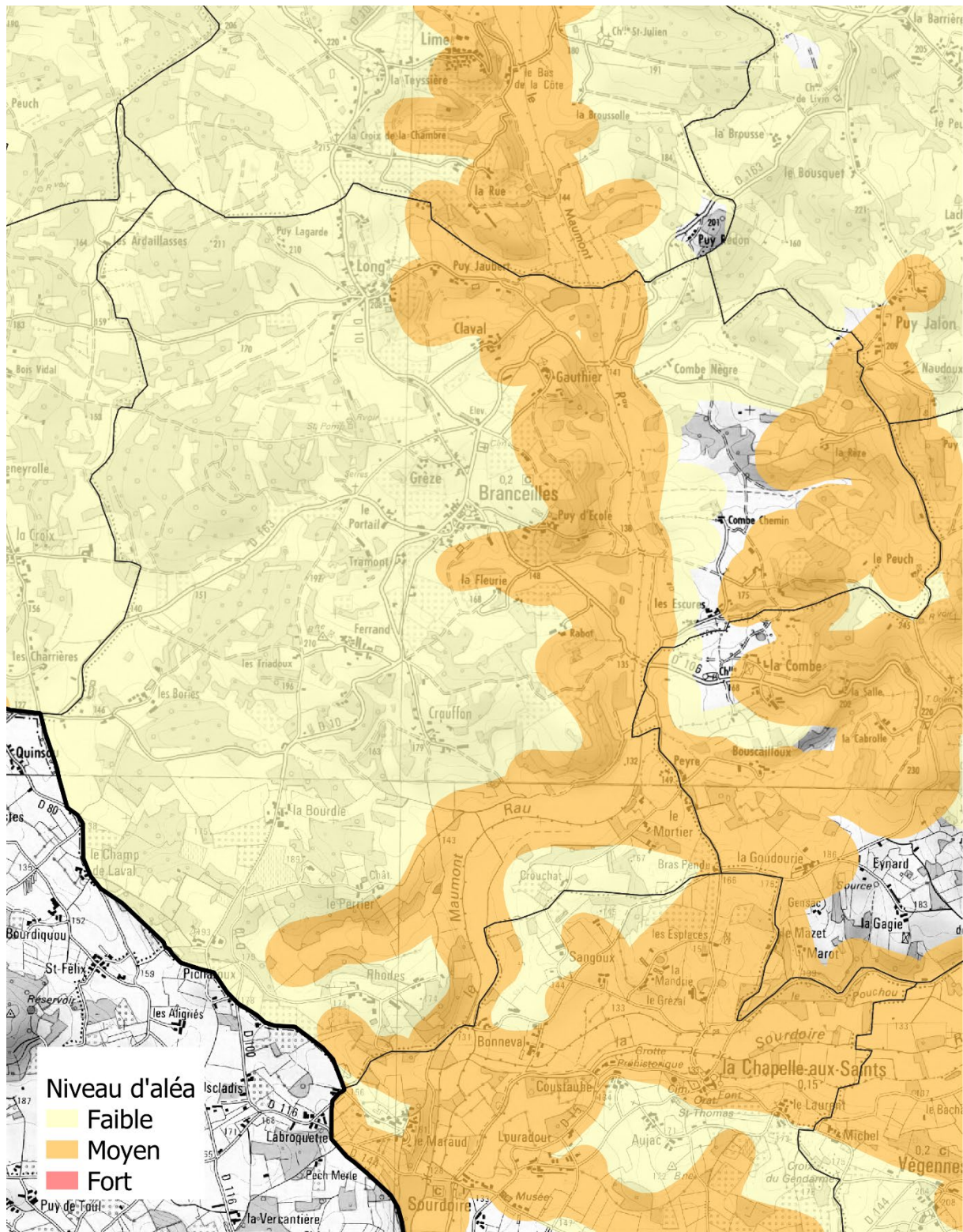
## 2.6 Beynat



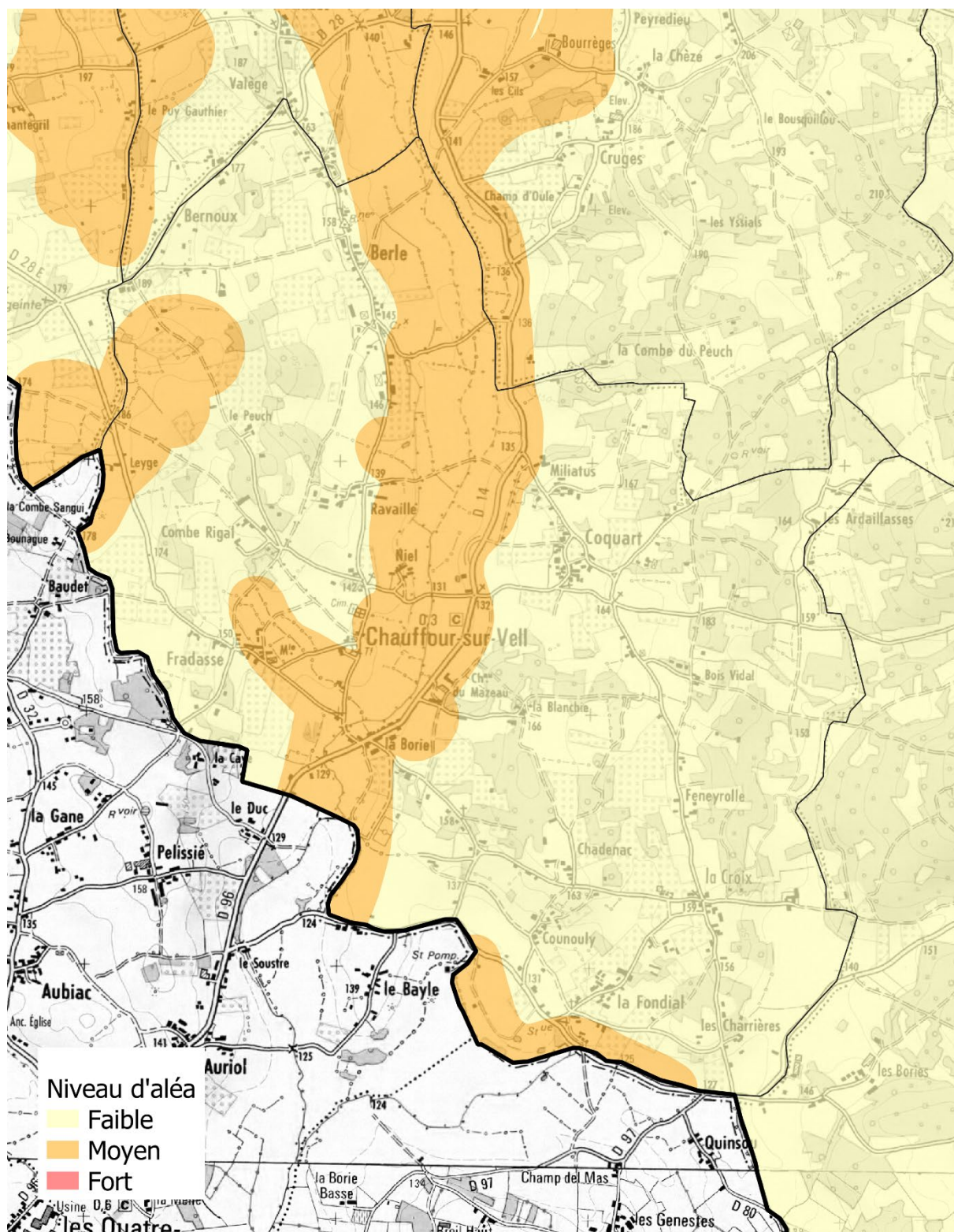
## 2.7 Bilhac



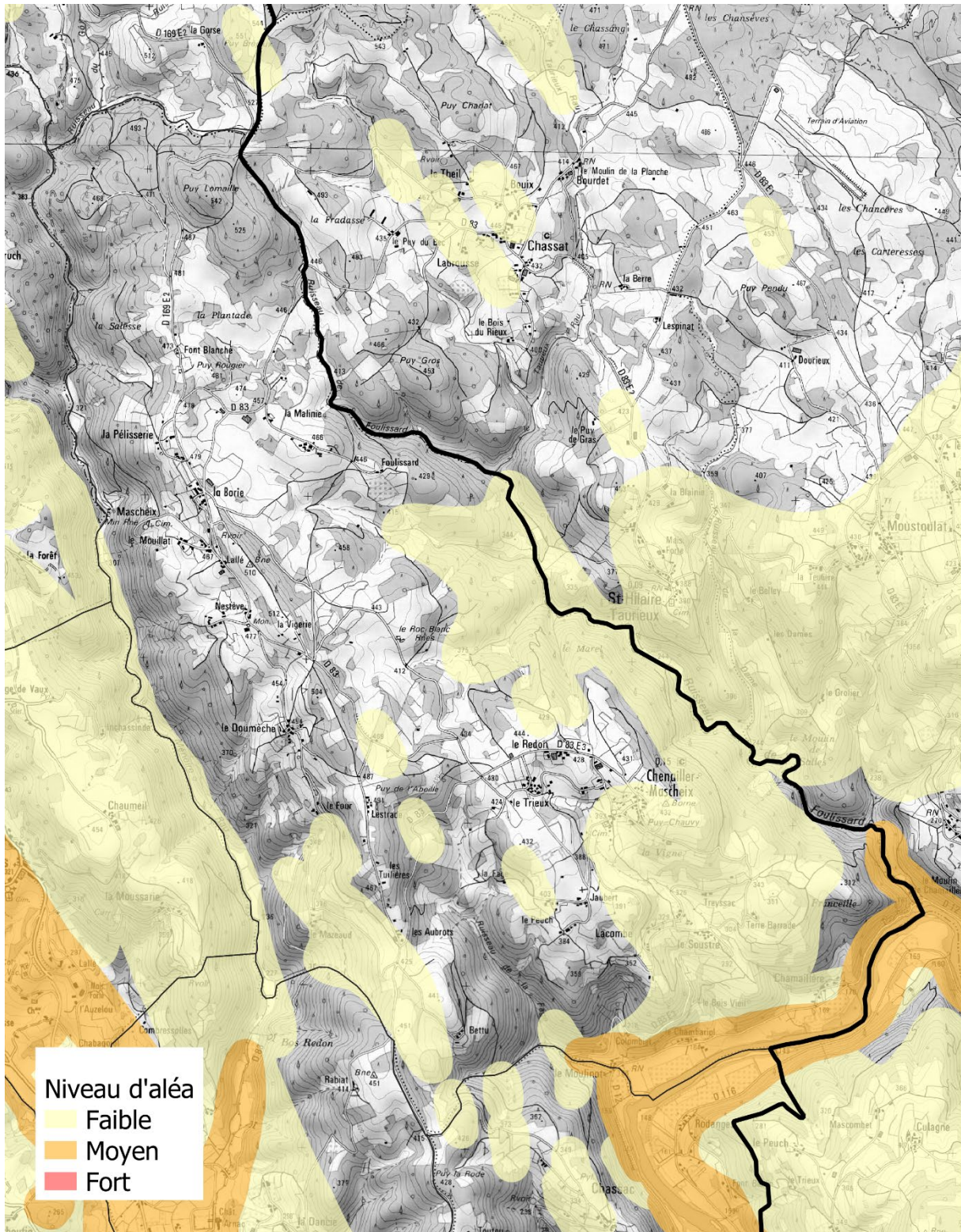
## 2.8 Branceilles



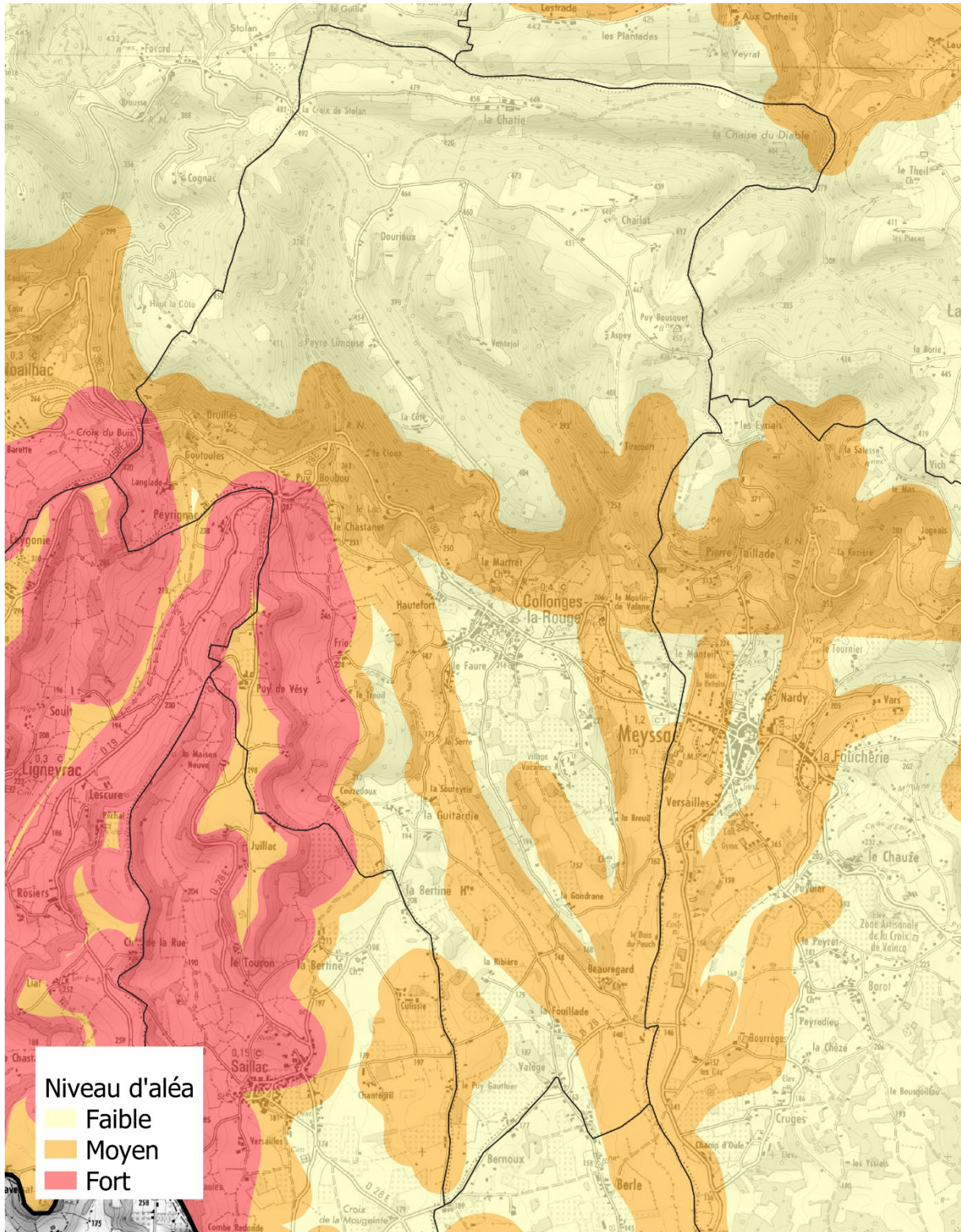
## 2.9 Chauffour-sur-Vell



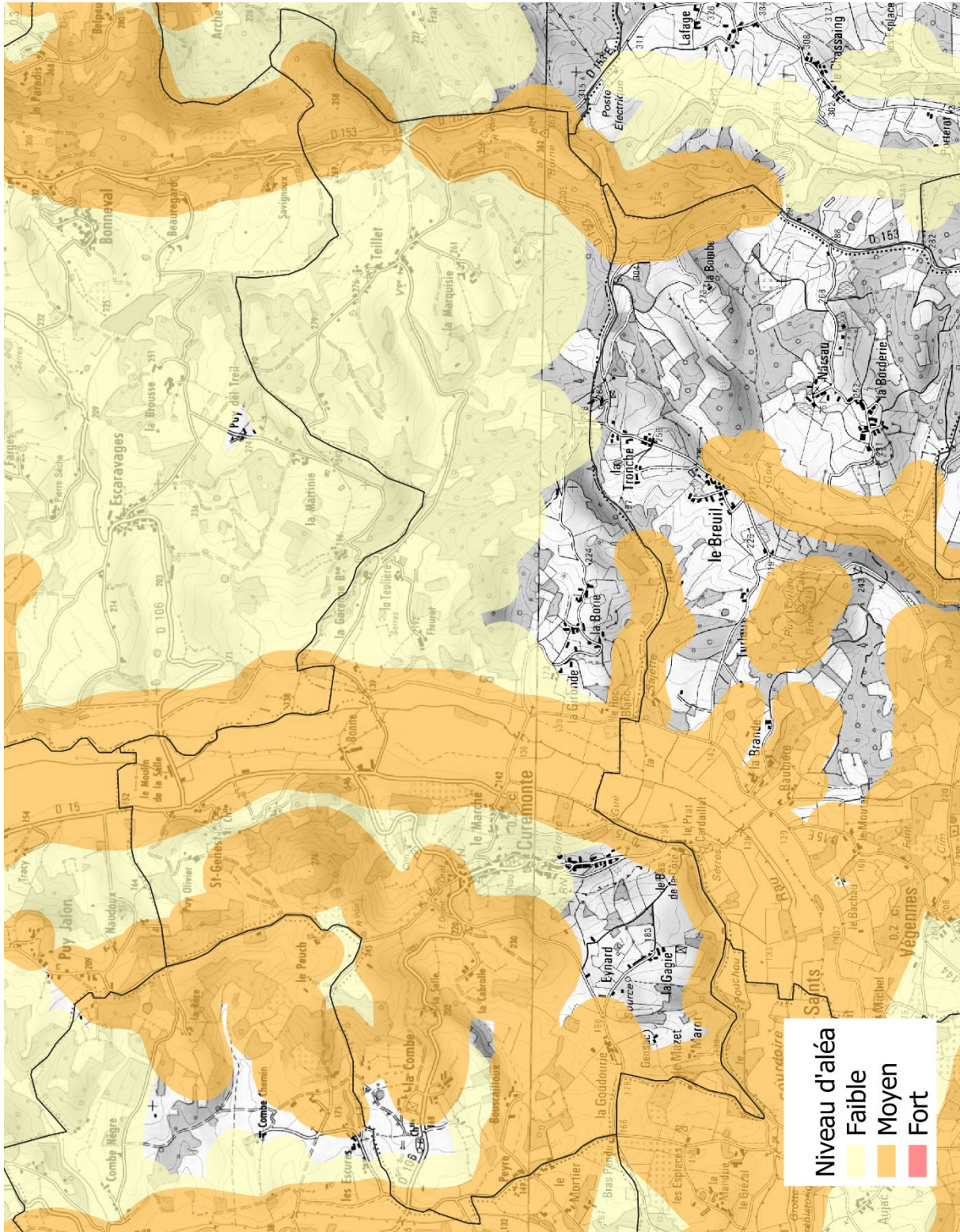
## 2.10 Chenailier-Mascheix



## 2.11 Collonges-la-Rouge

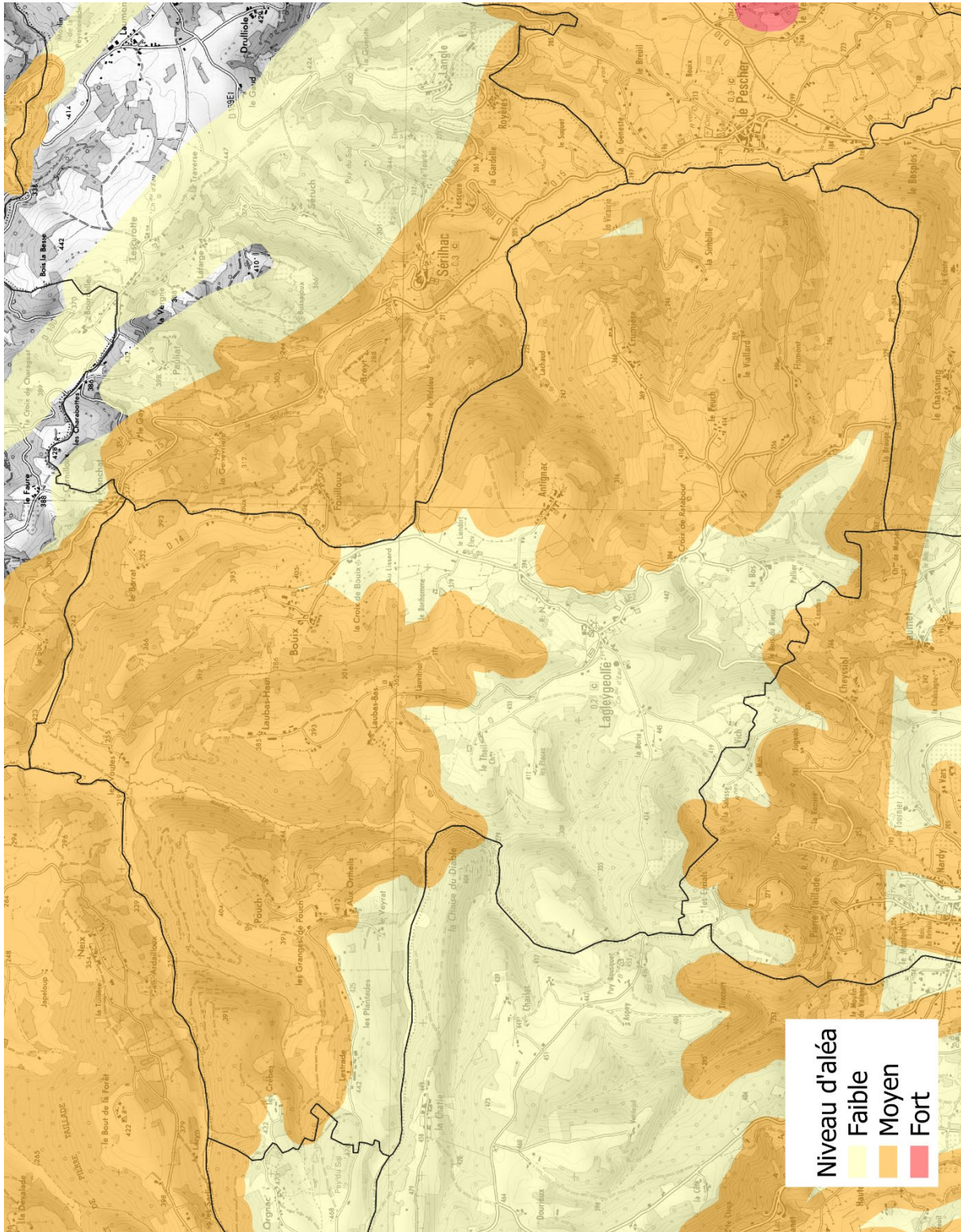


## 2.12 Curemonte

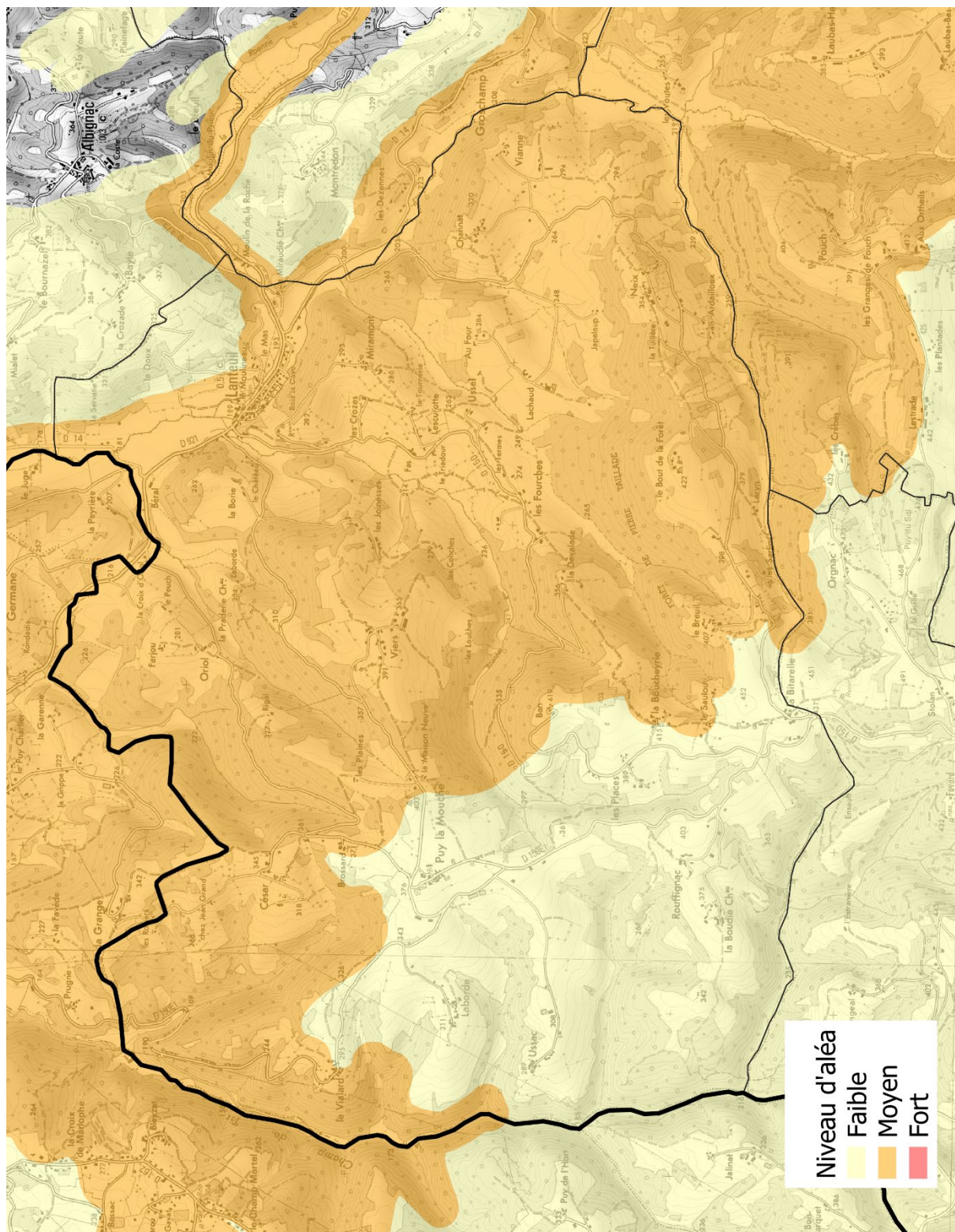




## 2.14 Lagleygeolle



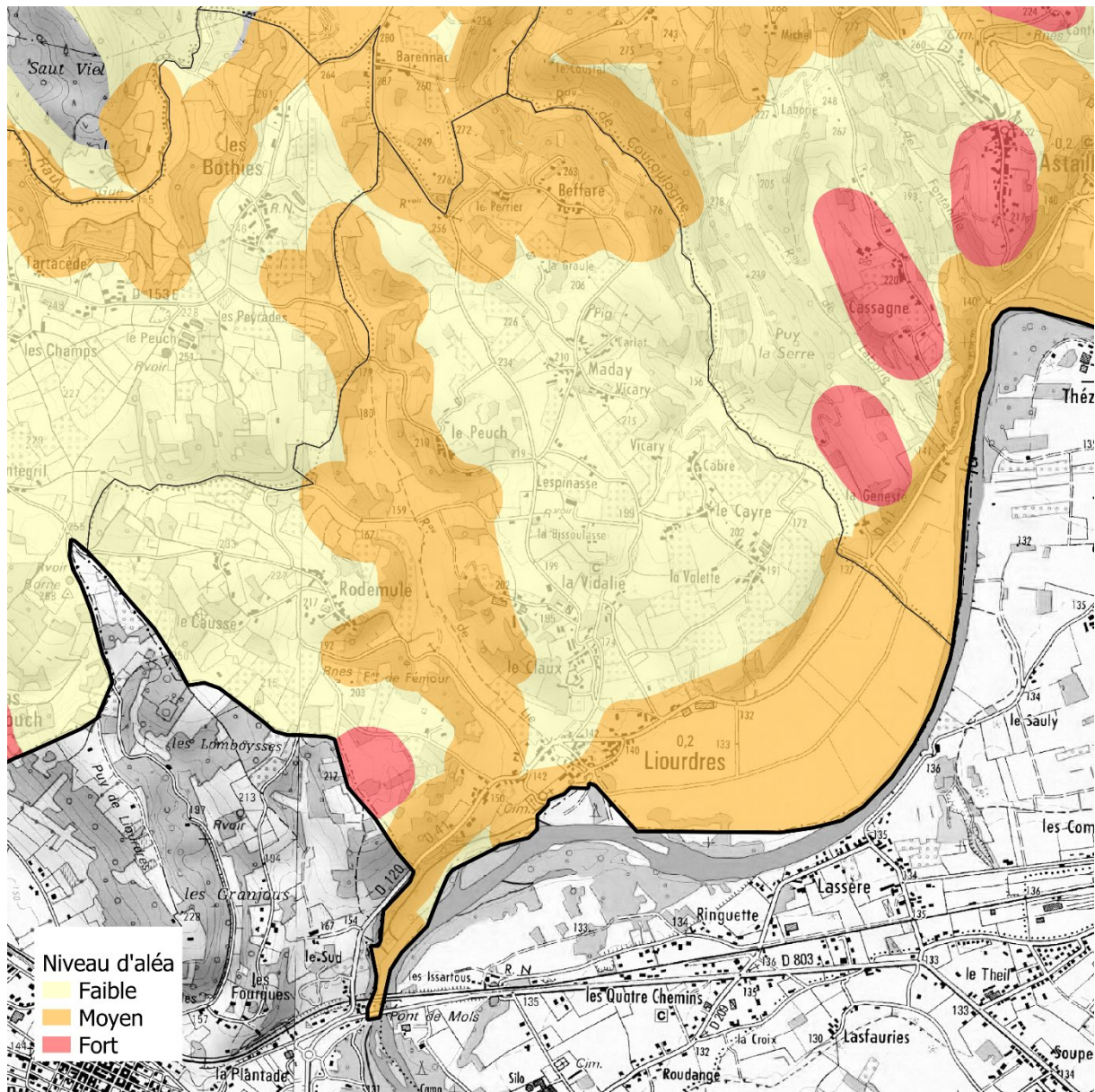
## 2.15 Lanteuil



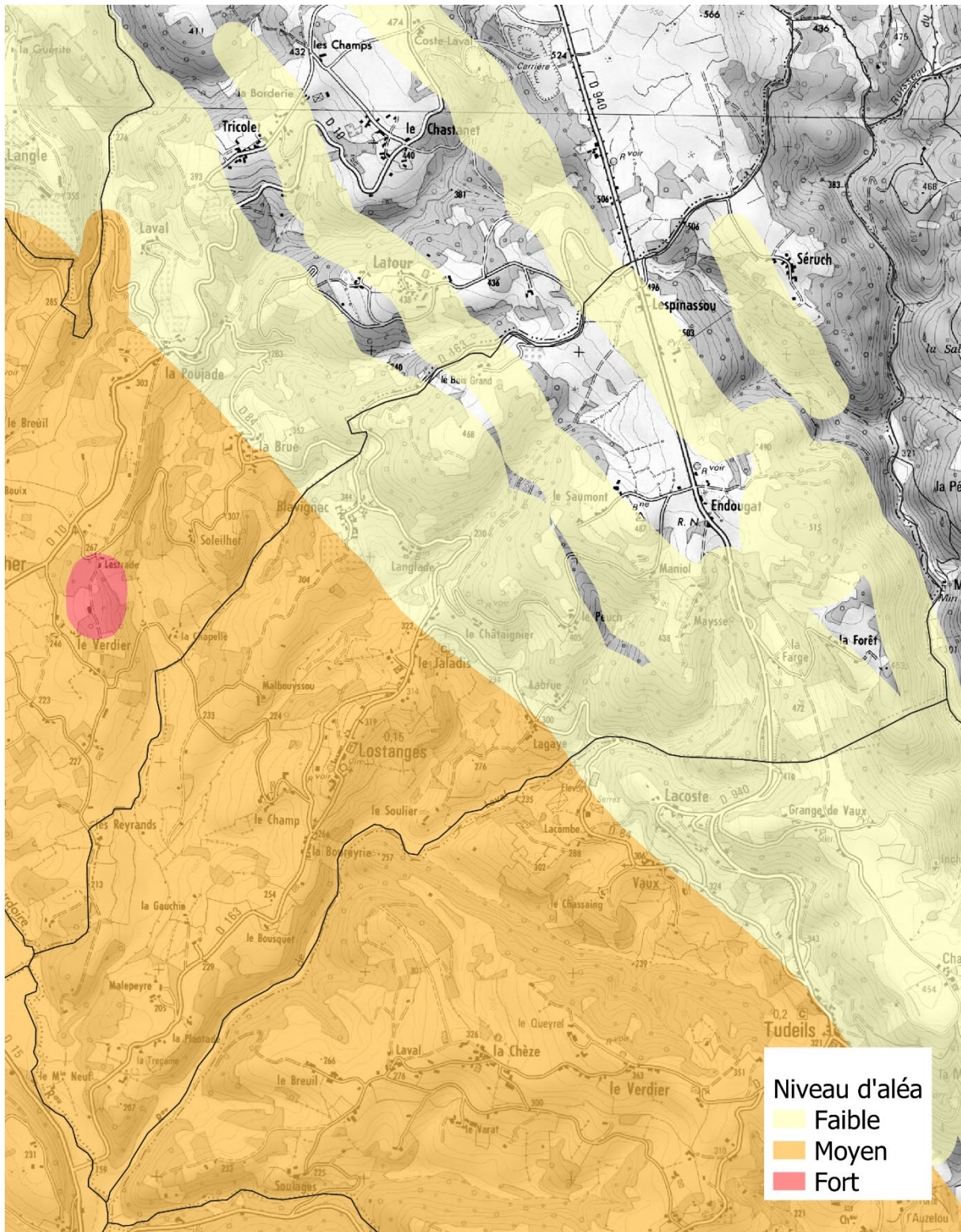




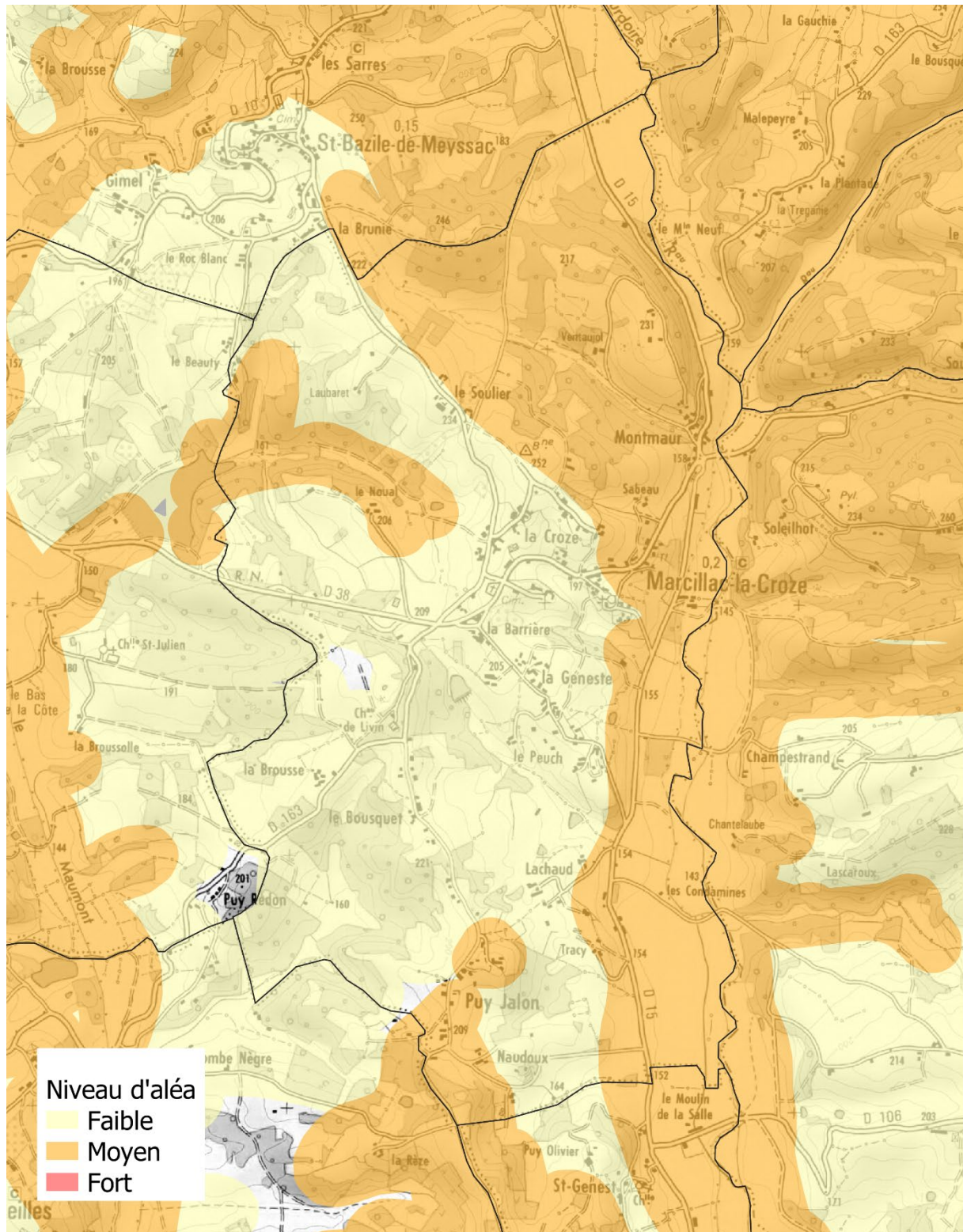
## 2.18 Liourdres



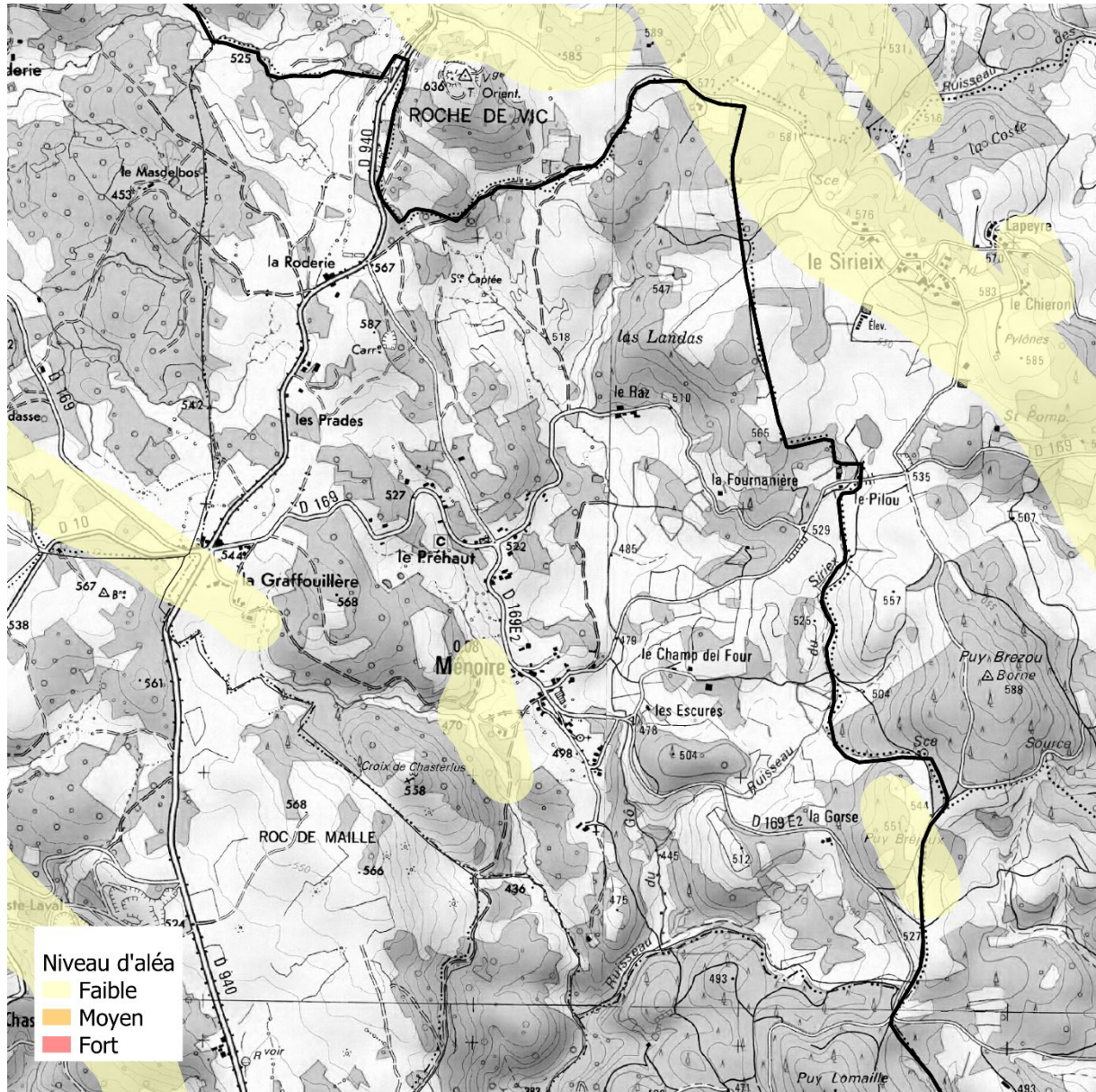
## 2.19 Lostanges



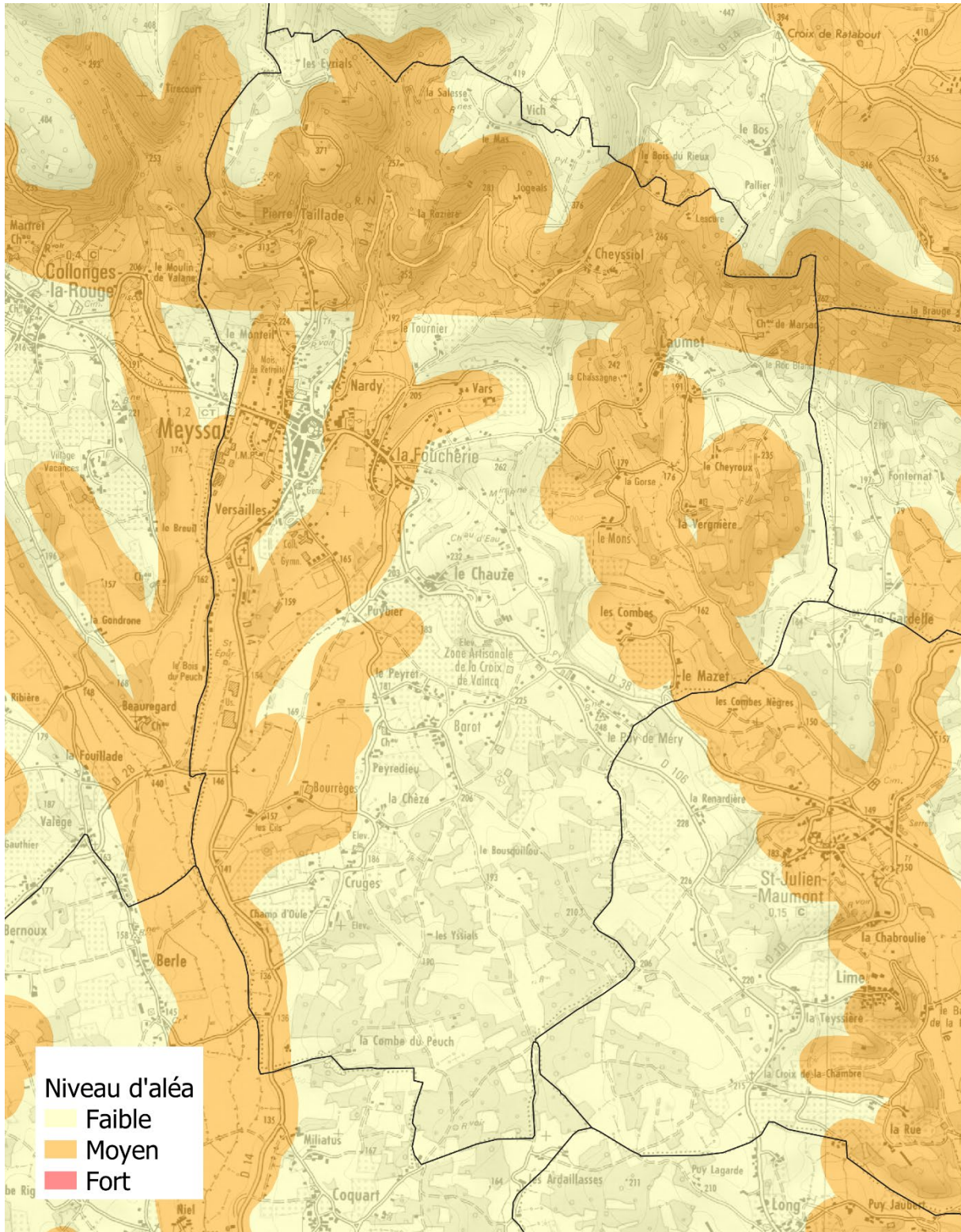
## 2.20 Marcillac-la-Croze



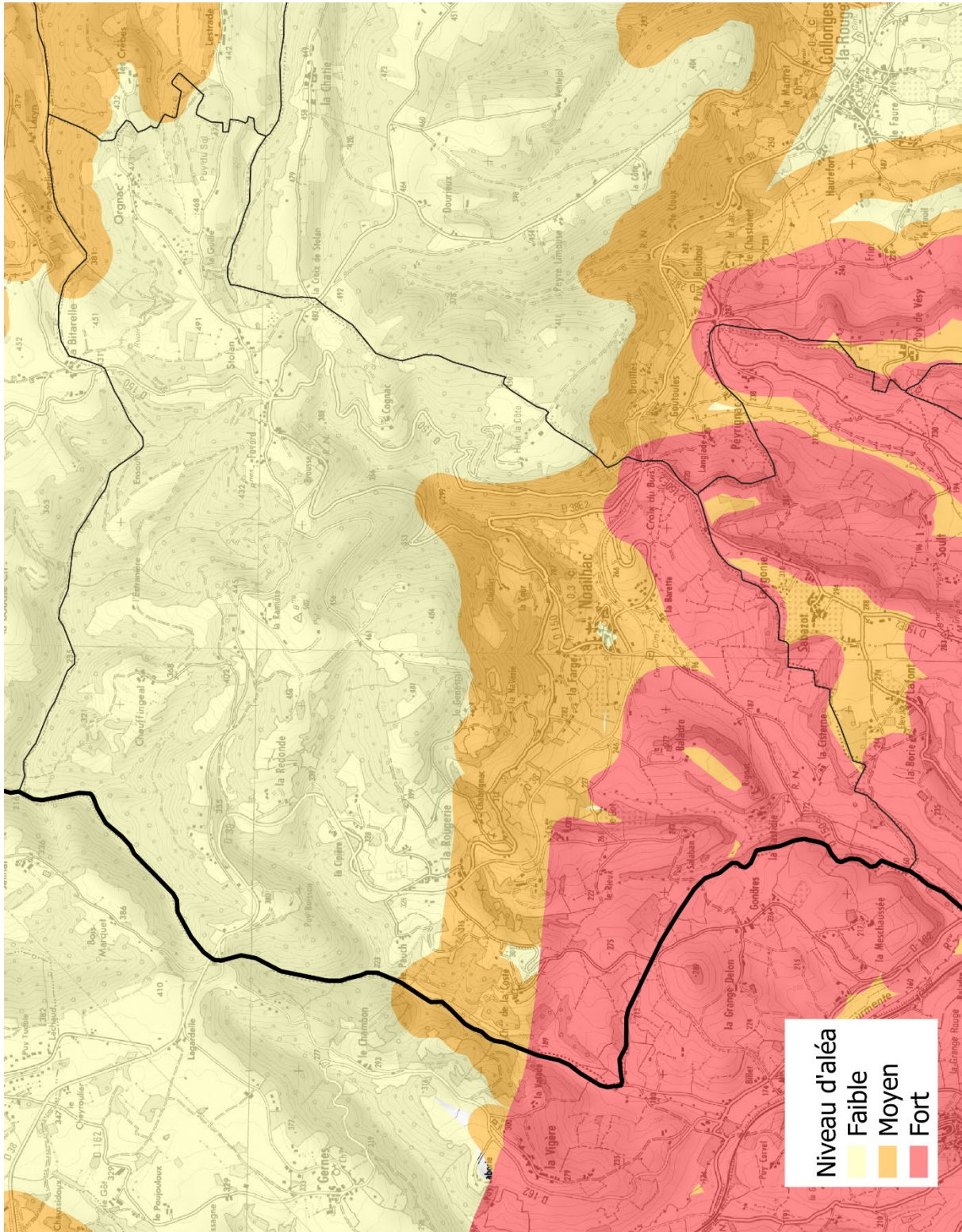
## 2.21 Ménoire



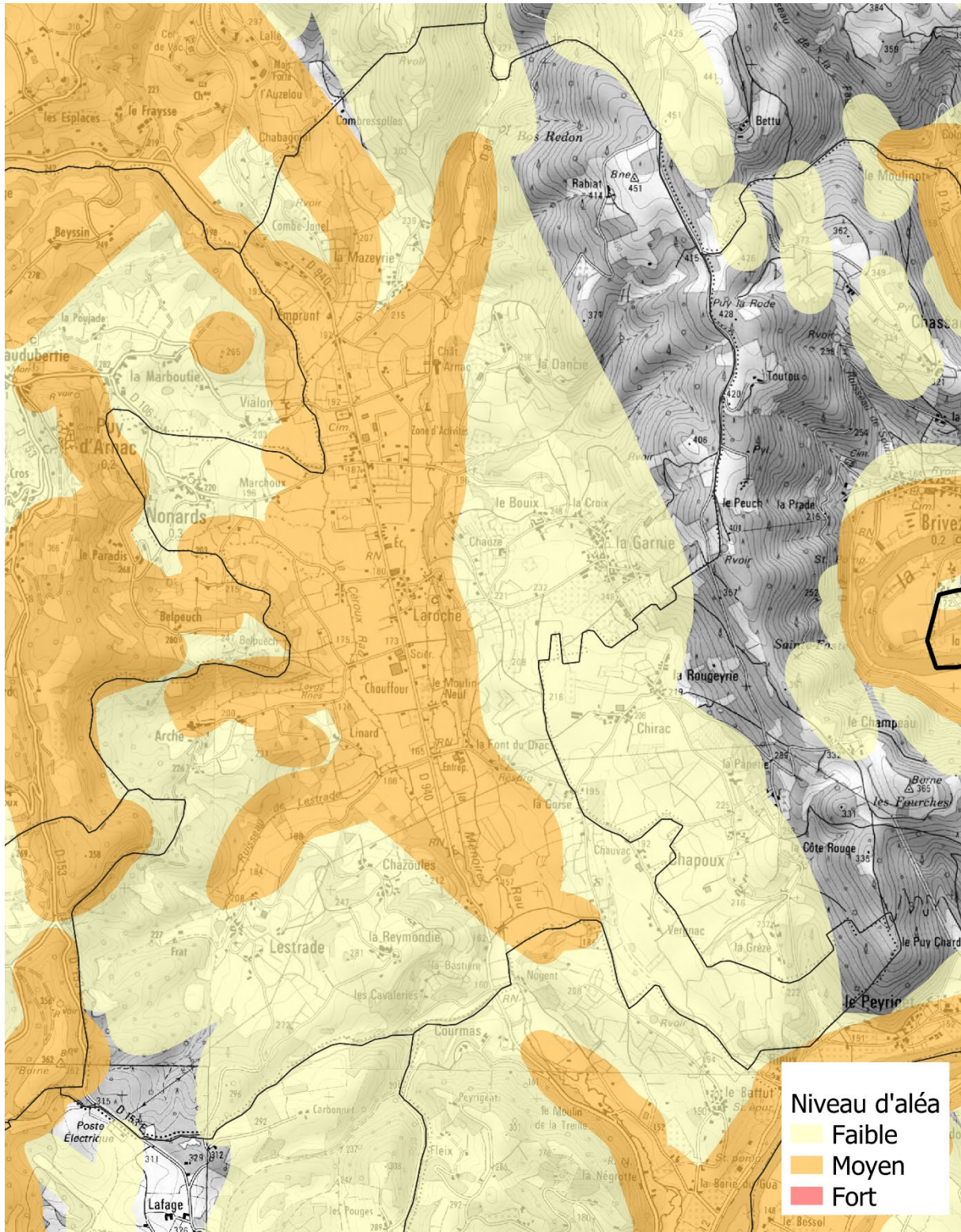
## 2.22 Meyssac



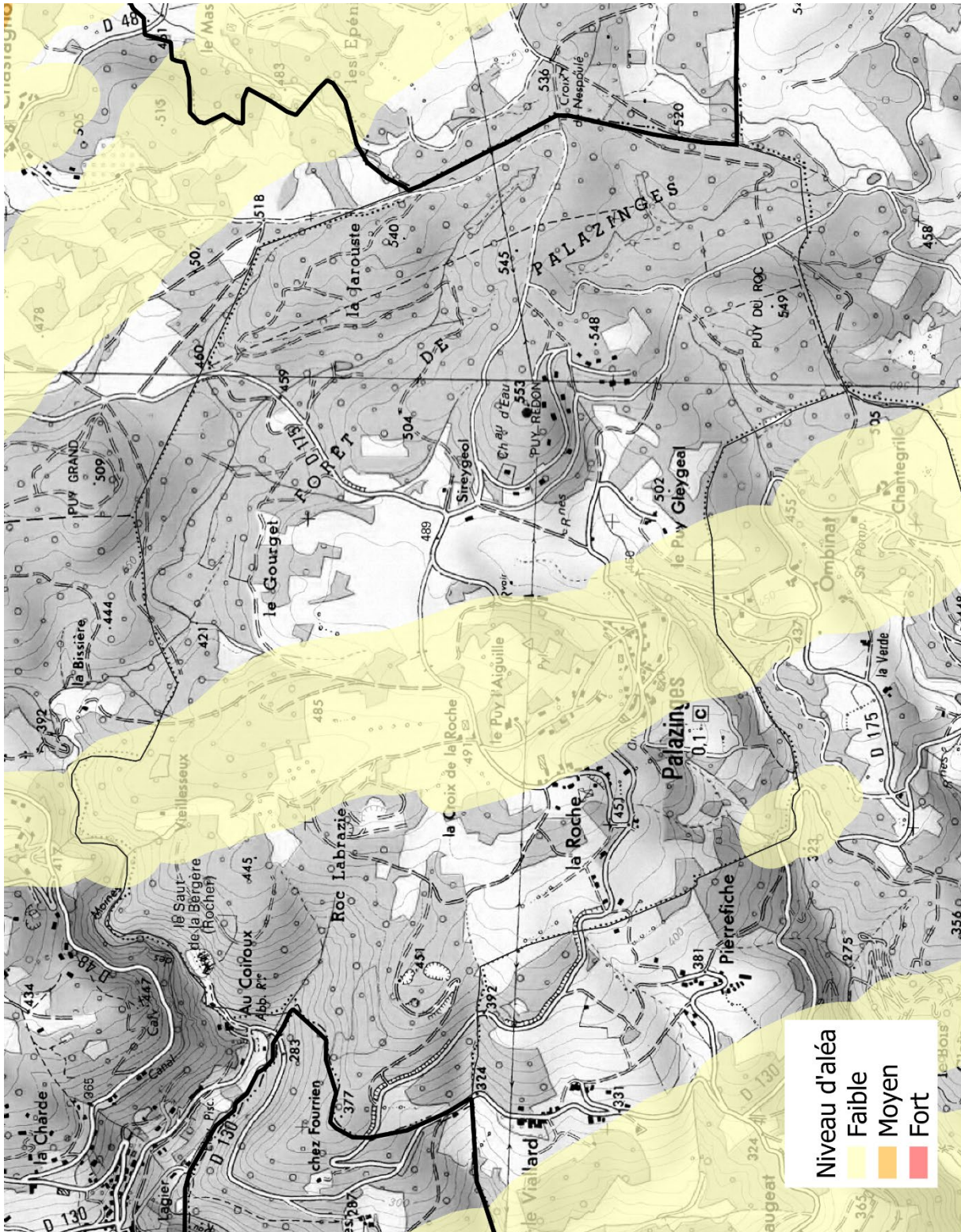
## 2.23 Noailhac



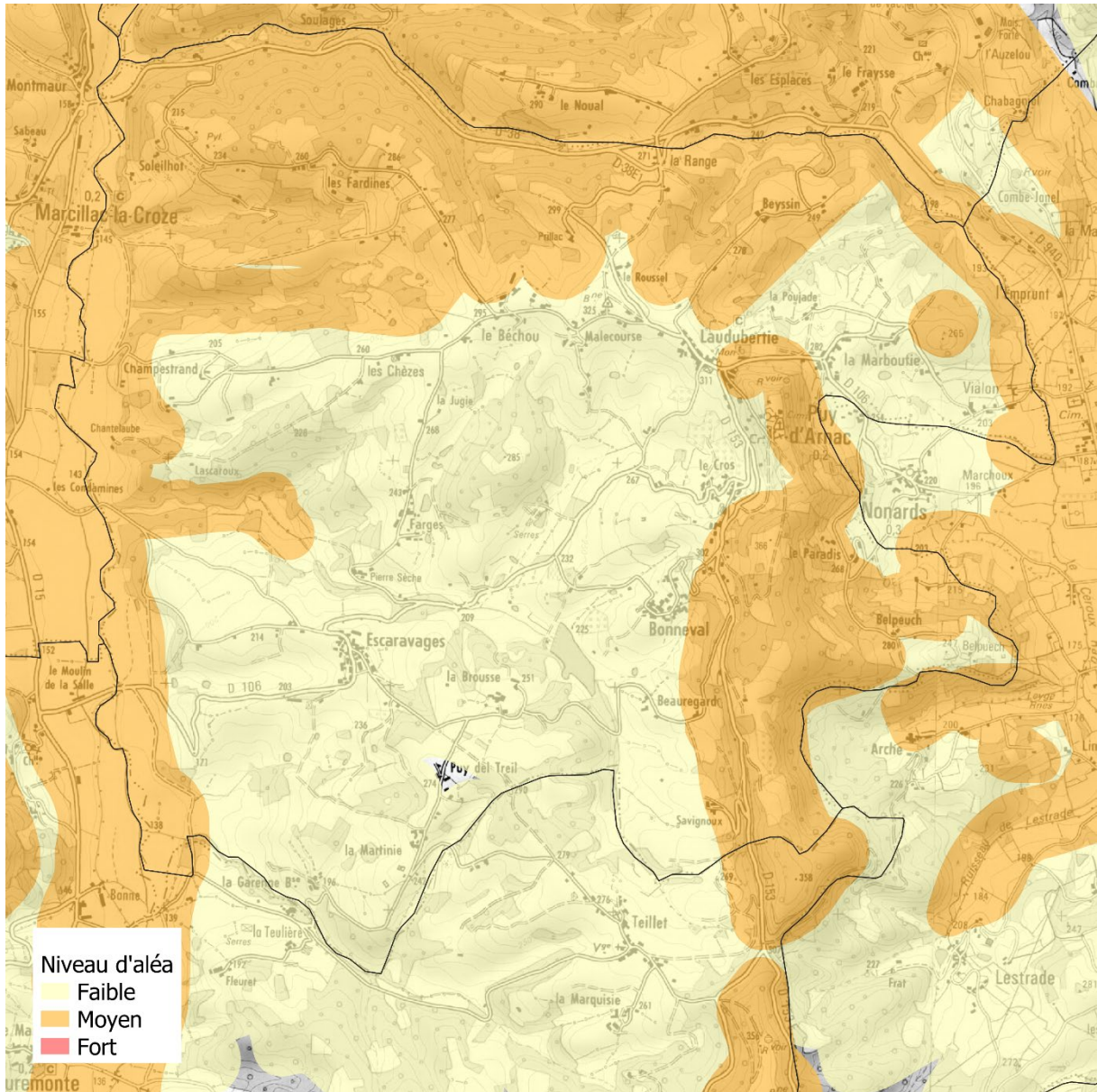
## 2.24 Nonards



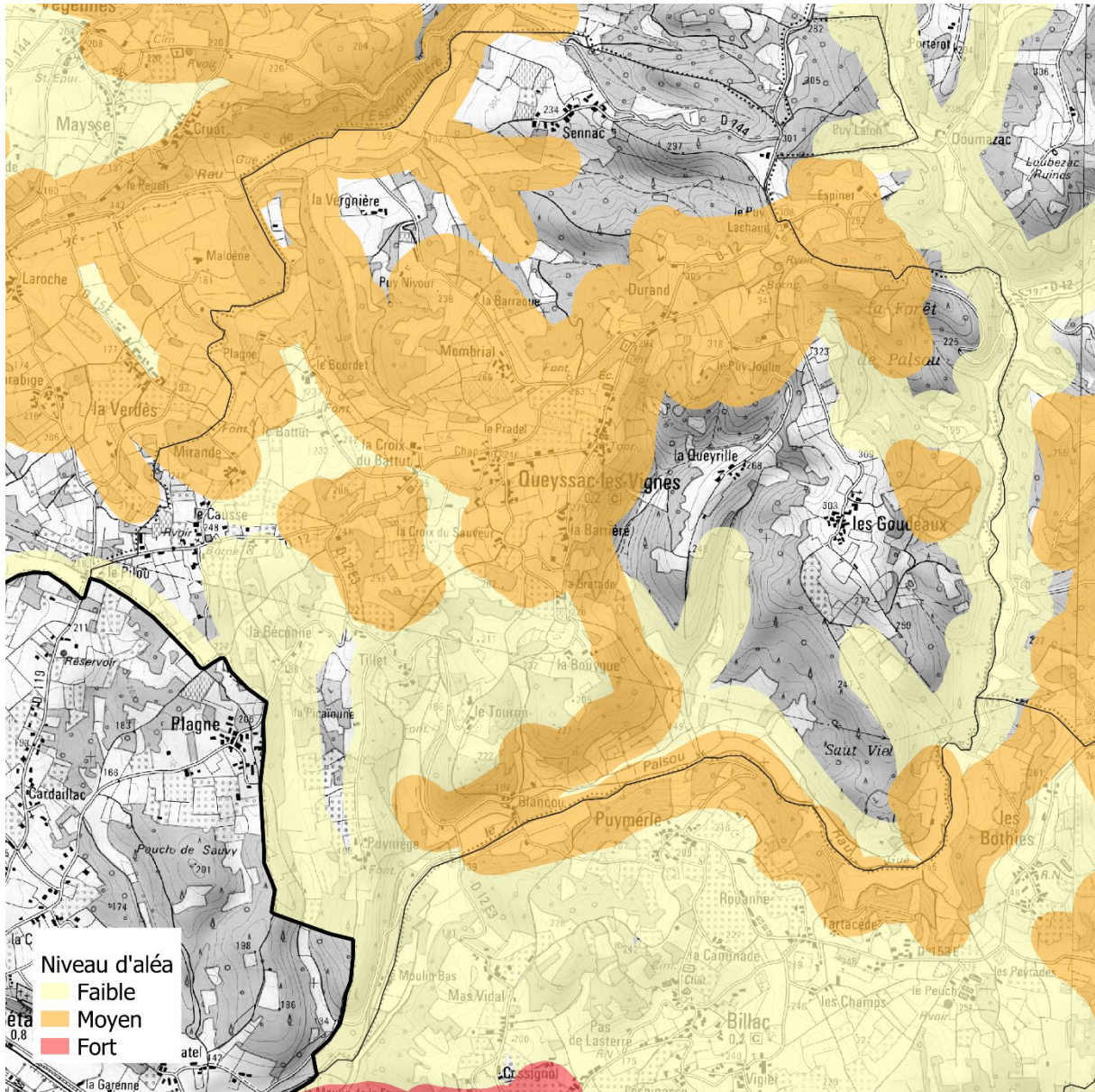
## 2.25 Palazinges



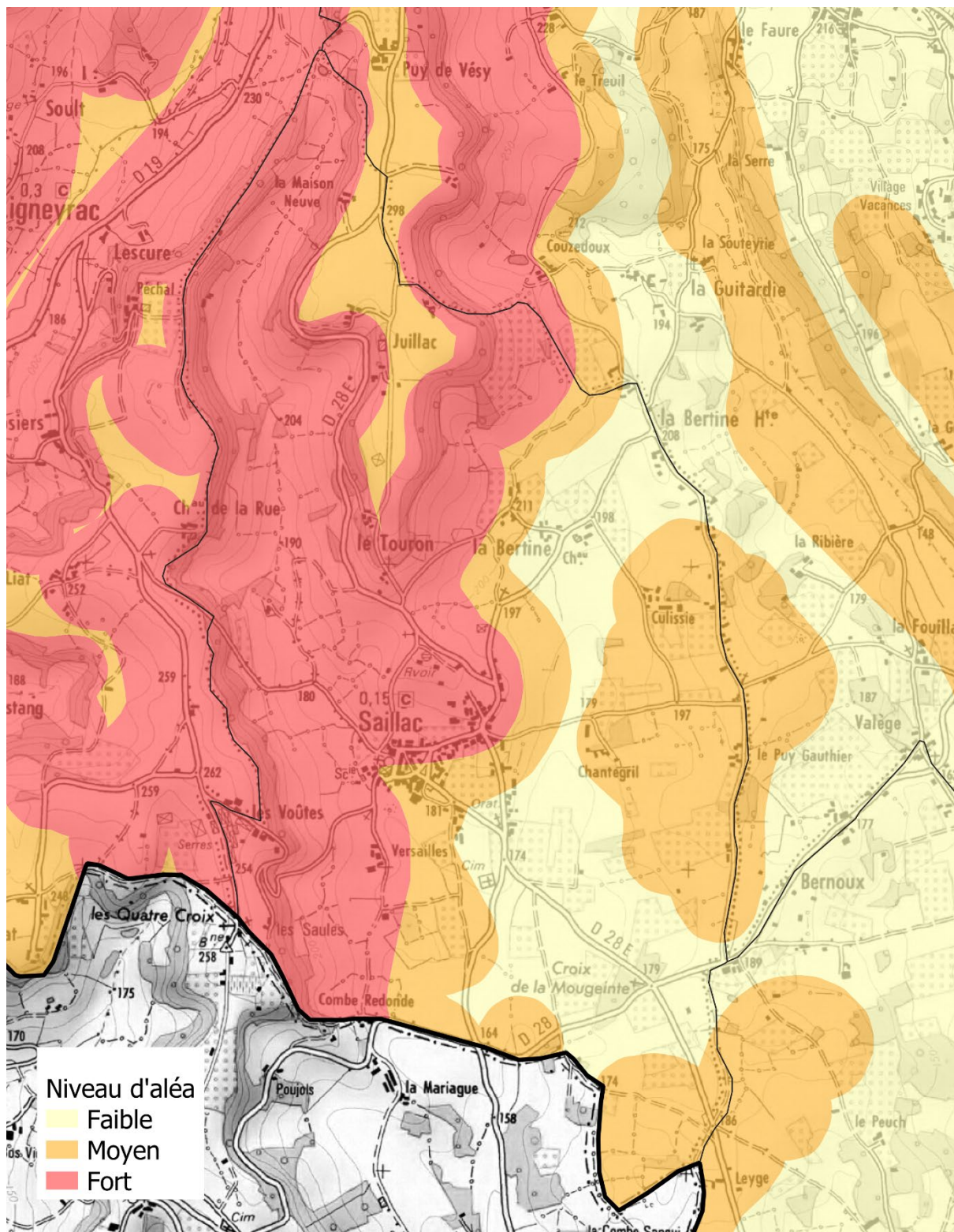
## 2.26 Puy-d'Arnac



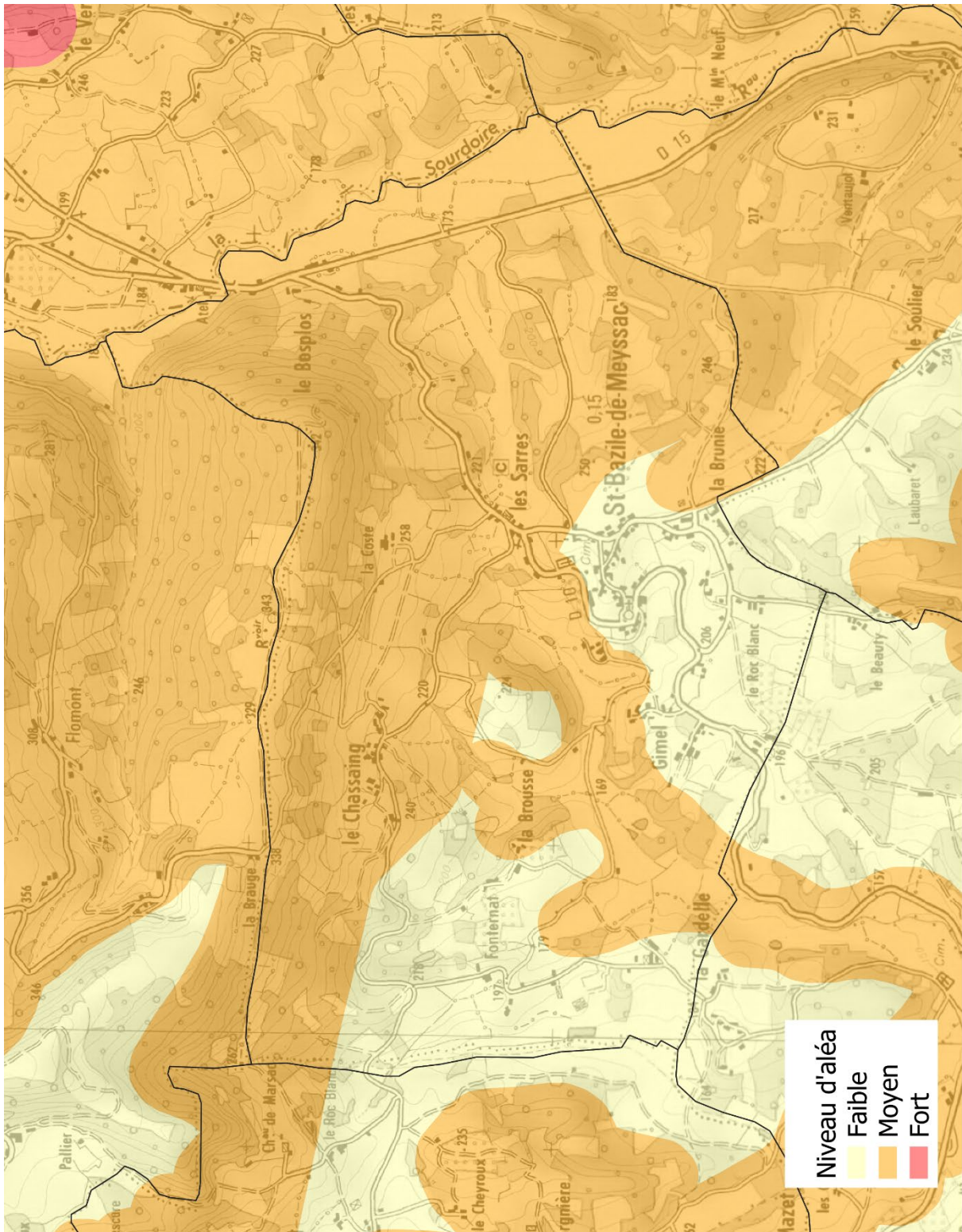
## 2.27 Queyssac-les-Vignes



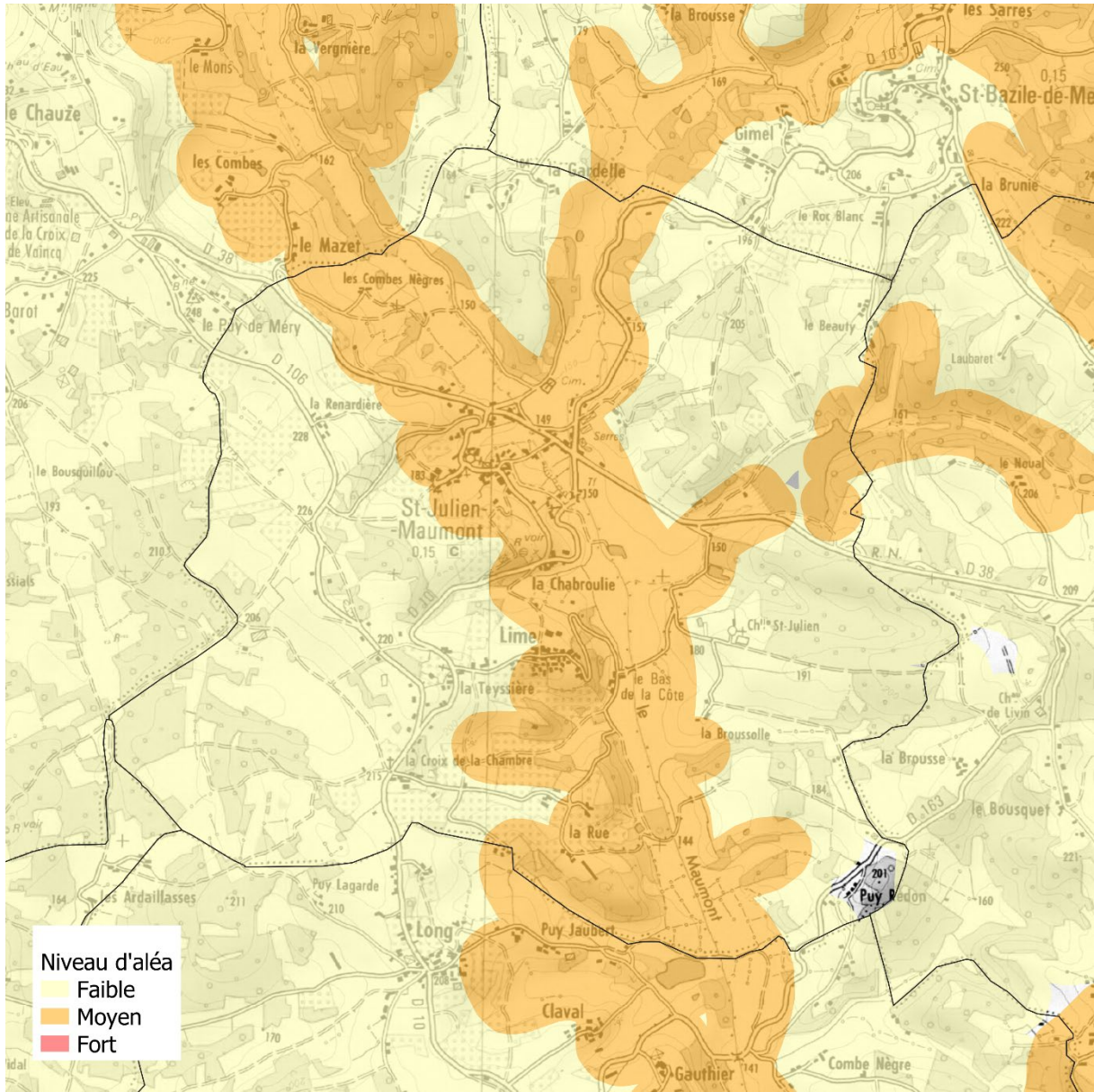
## 2.28 Saillac



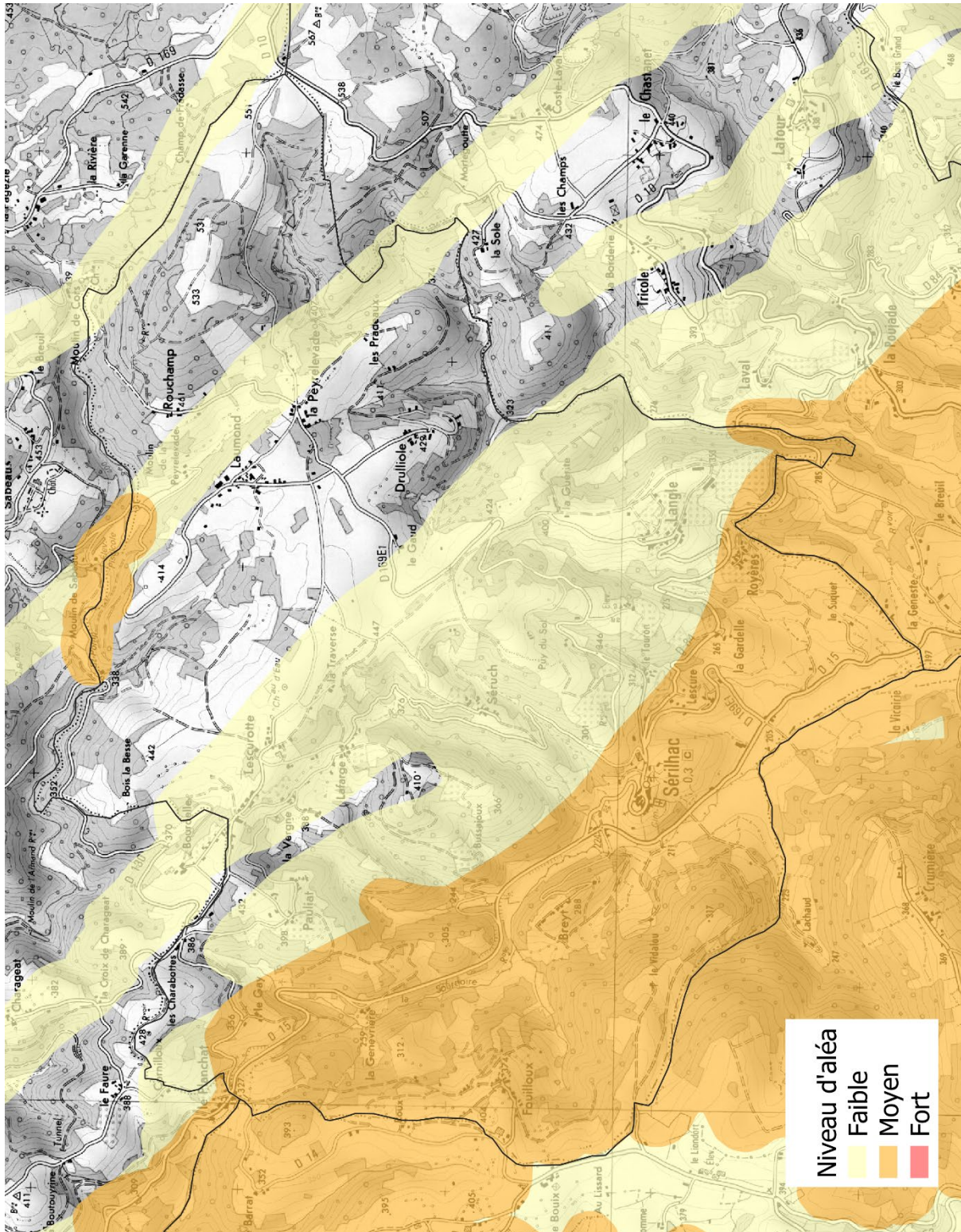
## 2.29 Saint-Bazile-de-Meyssac



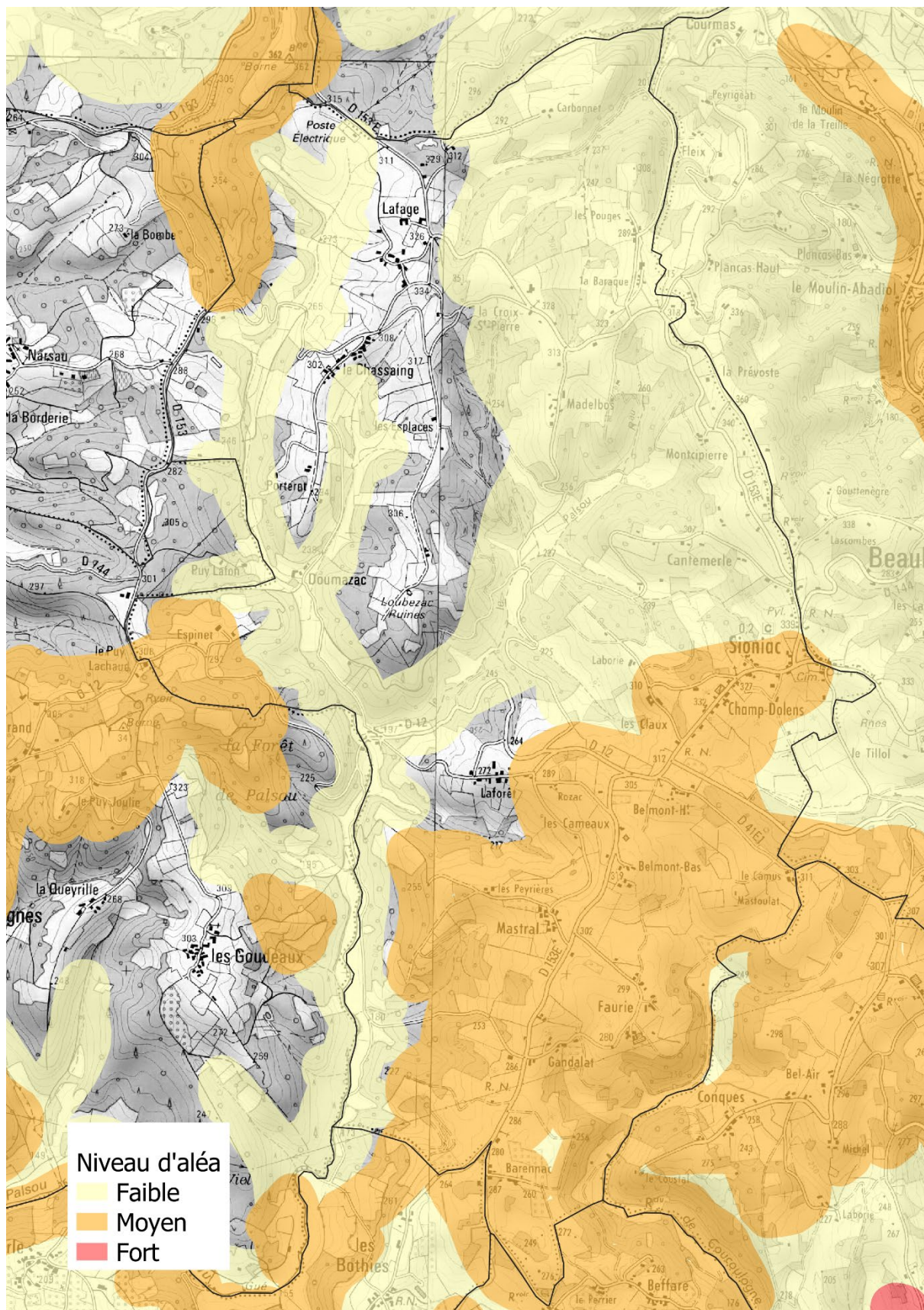
## 2.30 Saint-Julien-Maumont



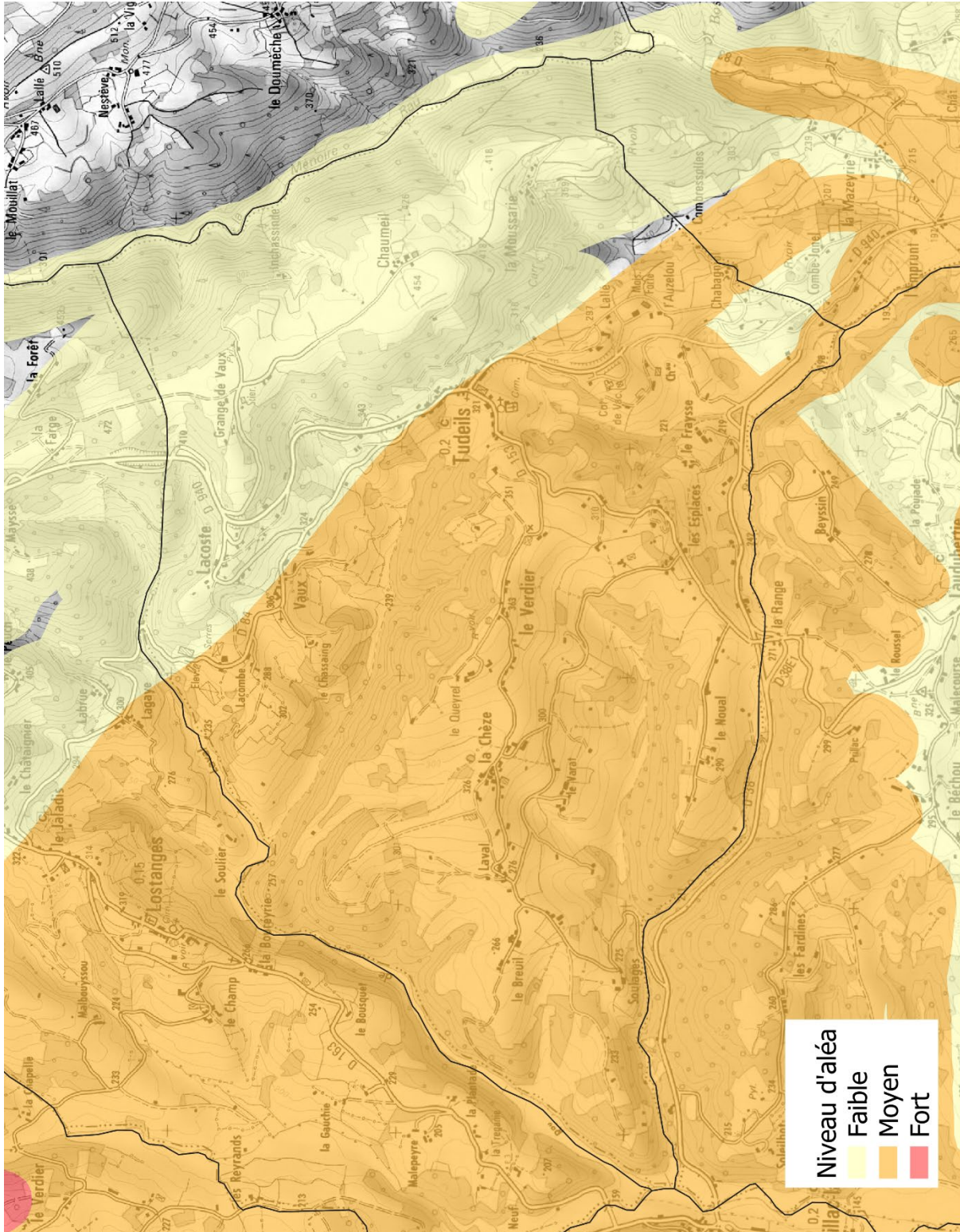
## 2.31 Sérilhac



## 2.32 Sioniac



### 2.33 Tudeils



## 2.34 Végennes

